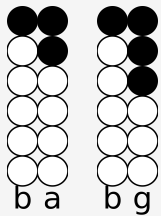


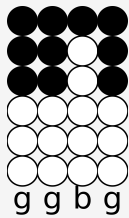
Tin whistle tabs for: Just the Way I'm Feeling

Categories: Rock

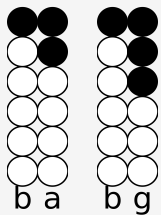
Author/Performer: Feeder



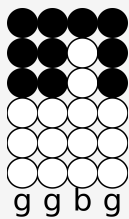
Love in, love out,



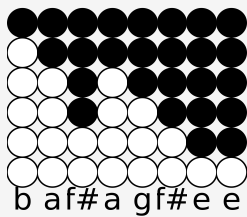
find the feeling



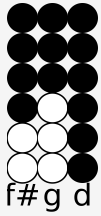
Scream in, scream out,



time for healing

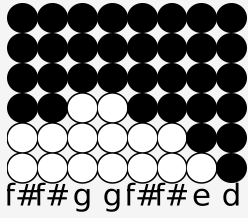


You're watching clouds come over you.



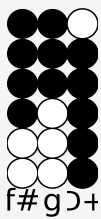
f# g d

Torn in two,



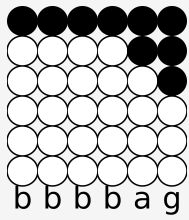
f## g gf## e d

You close your eyes for some place new,



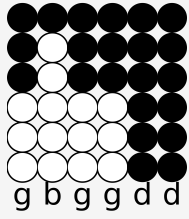
f# g 3+

Torn in two



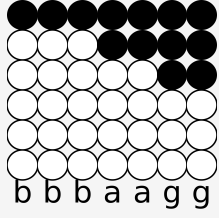
b b b b a g

And I feel it's going down,



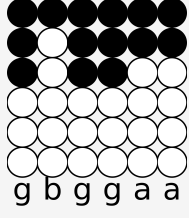
g b g g d d

Ten feet below the ground,



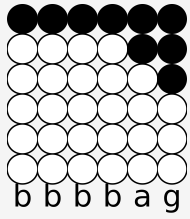
b b b a a g g

I'm waiting for your healing hand,

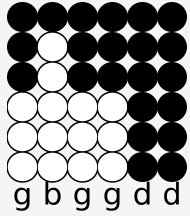


g b g g a a

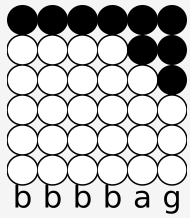
One touch could bring me round,



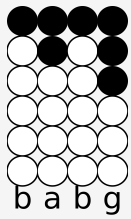
I feel we're going down,



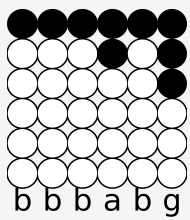
Ten feet below the ground,



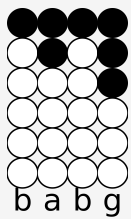
It's just the way I'm feeling



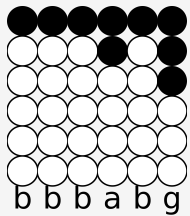
Two different views,



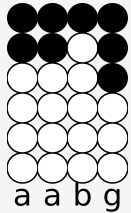
As words confuse and break



I can't get out,



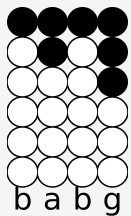
There's no way out of here,



I can't get clear.

Love in, love out

Find the feeling.



Yeah, yeah, it's just the way I'm feeling.....