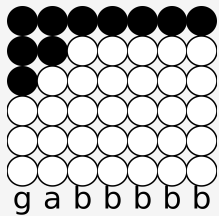


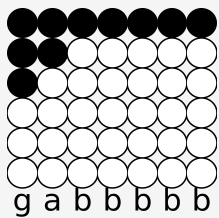
Tin whistle tabs for: Madis mäekalle (Folkmill)

Categories: Folk

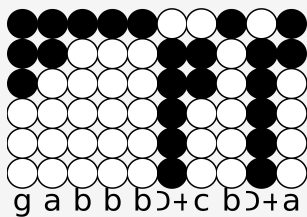
Author/Performer: Folkmill



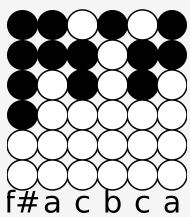
Ühest mehest see lugu



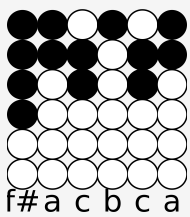
kellest peetakse lugu



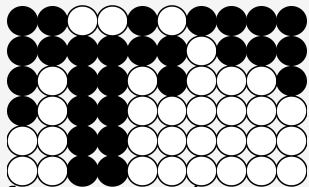
tema nimi on Madis Mäekalle



Teda igaüks teab

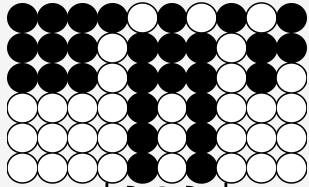


naesed tõstavad pead



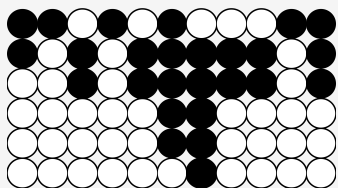
f# a D+D+a c b a a g

ja siis rmsaste viipavad talle



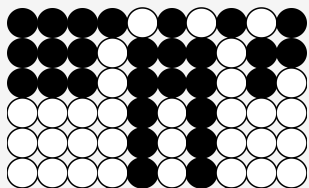
g g g b D+G+D+b c a

Madisel on ka üks sõber Immu



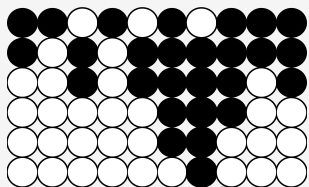
a b c b c E+D+c c b g

kes aeg-ajalt viskas ühe vembu



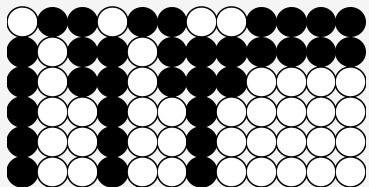
g g g b D+G+D+b c a

Naeste remuks ta trombooni puhus



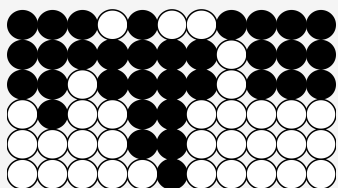
a b c b c E+D+f# a g

vahest valesti - see oli juhus



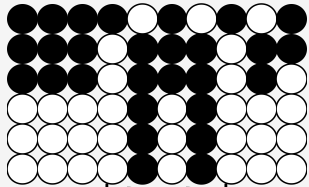
D+b g D+b g D+c a a a a

Kas Tallinnas Saares või vrokeste maal



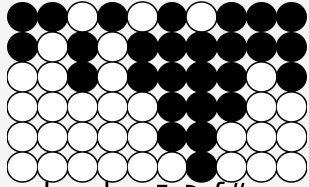
gf# a c E+D+c b g g g

kus iganes pidu seal tantsib üks paar



g g g b D G D b c a

olgu Piret või Pille või Malle



a b c b c E D f# a g

ikka remus on Madis Mäekalle