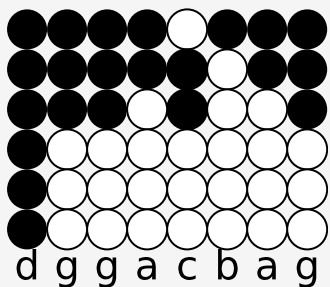
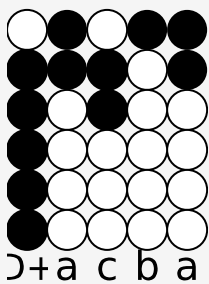


# Tin whistle tabs for: A Rovin'

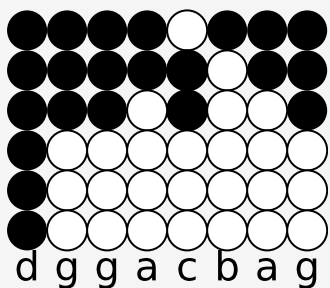
A Rovin'



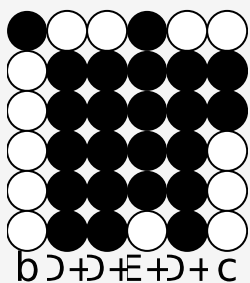
In Ply-mouth-town there lived a maid,



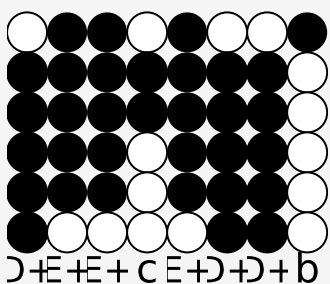
Bless you young wo-man.



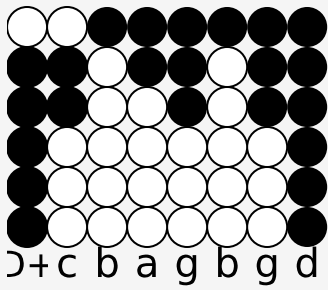
In Ply-mouth-town there lived a maid,



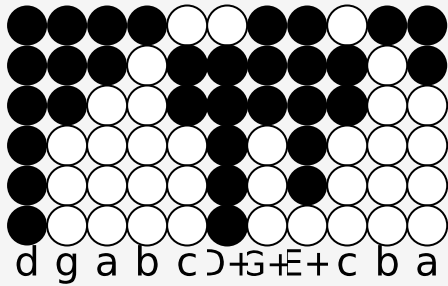
Oh, mind what I do say.



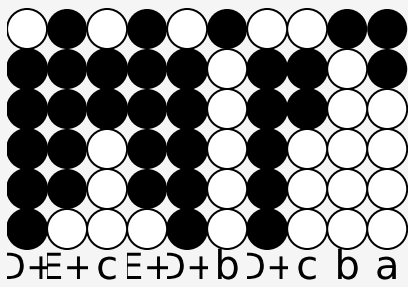
In Ply-mouth-town there lived a maid



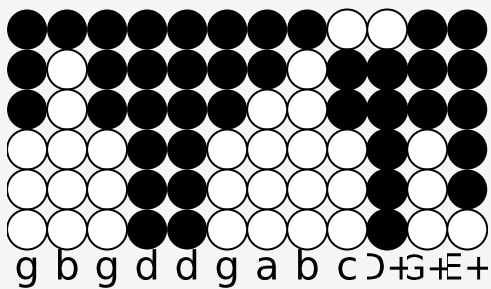
And she was mis-tress of her trade.



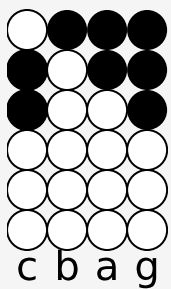
I'll go no more a-rov-in with you fair maid.



A-rov-in, a-rov-in', since rov-in's been



My ru i in, I'll go no more a-rov-in'



With you fair maid