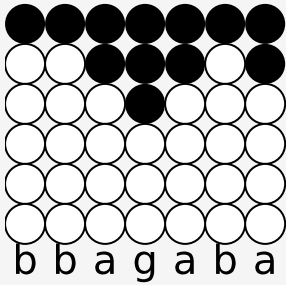
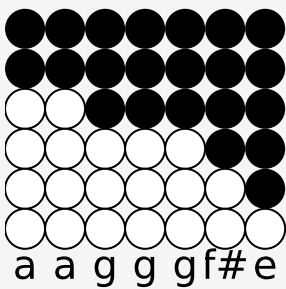


Tin whistle tabs for: Always look on the light side of life

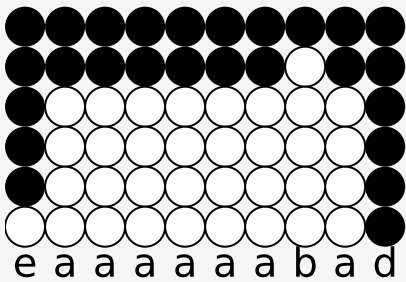
Author/Performer: Monty Python



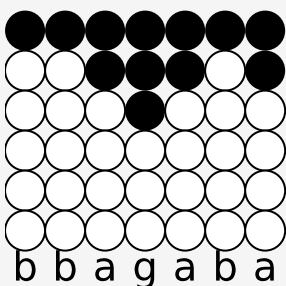
Some things in life are bad



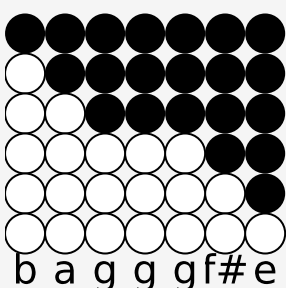
They can really make you mad



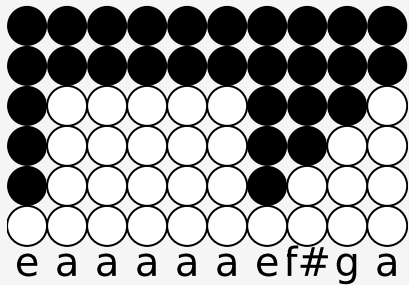
Other things just make you swear and curse.



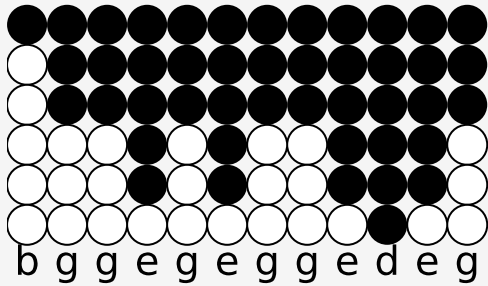
When you're chewing on life's gristle



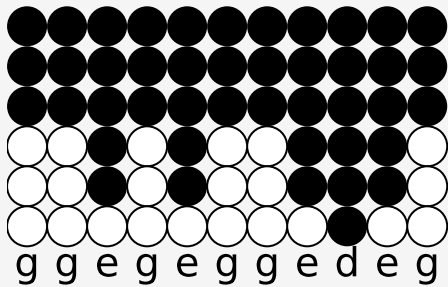
Don't grumble, give a whistle



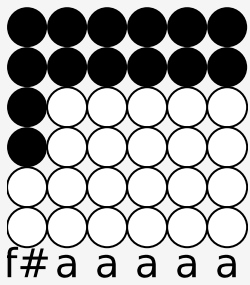
And this'll help things turn out for the best...



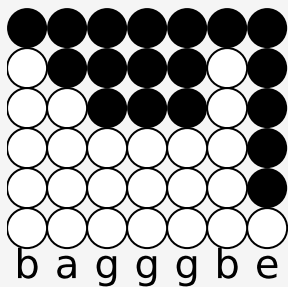
And...always look on the bright side of life...



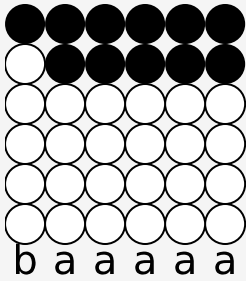
Always look on the light side of life...



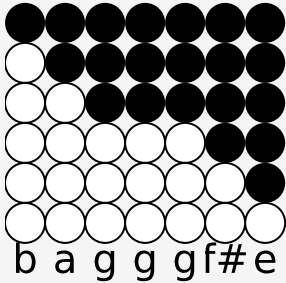
If life seems jolly rotten



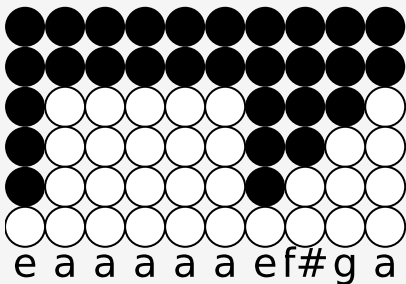
There's something you've forgotten



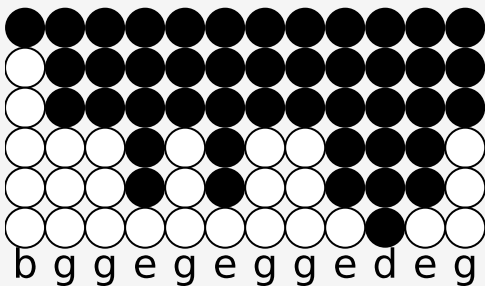
When you're feeling in the dumps



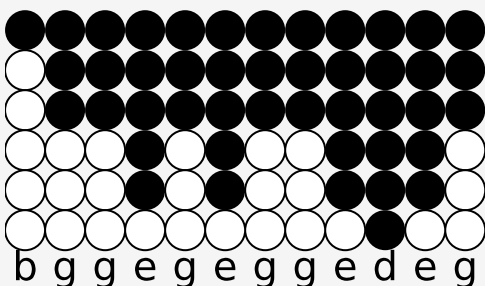
Don't be silly chumps



Just purse your lips and whistle - that's the thing.



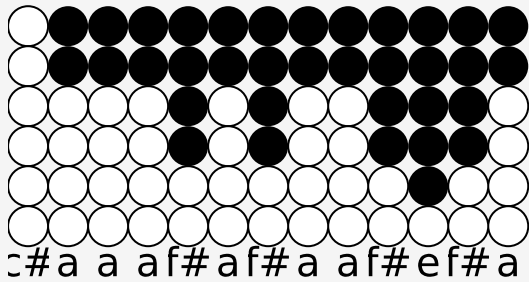
And...always look on the bright side of life...



Always look on the light side of life...

For life is quite absurd
 And death's the final word
 You must always face the curtain with a bow.
 Forget about your sin - give the audience a grin
 Enjoy it - it's your last chance anyhow.
 So always look on the bright side of death
 Just before you draw your terminal breath

Life's a piece of shit
When you look at it
Life's a laugh and death's a joke, it's true.
You'll see it's all a show
Keep 'em laughing as you go
Just remember that the last laugh is on you.
And always look on the bright side of life...
Always look on the right side of life...



Always look on the light side of life...