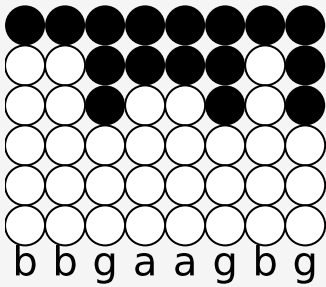
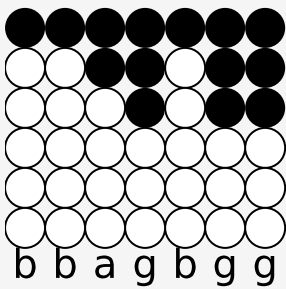


Tin whistle tabs for: Bad Moon Rising

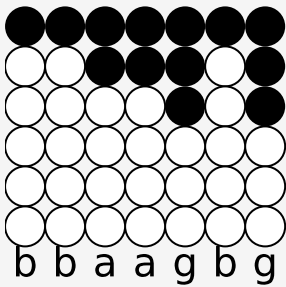
Author/Performer: Creedence Clearwater Revival



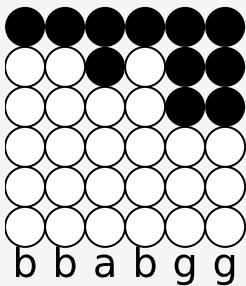
I see the bad moon a-rising.



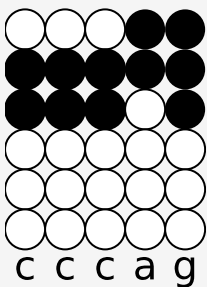
I see trouble on the way.



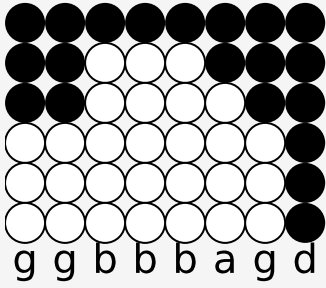
I see earthquakes and lightnin.



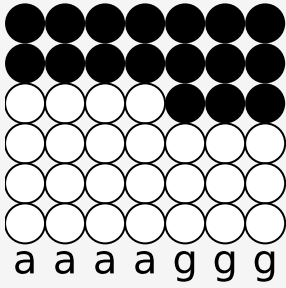
I see bad times today.



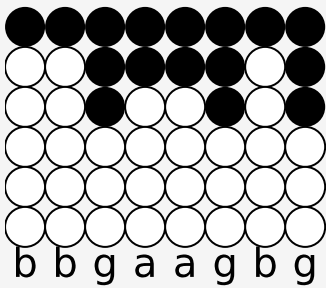
Don't go 'round tonight,



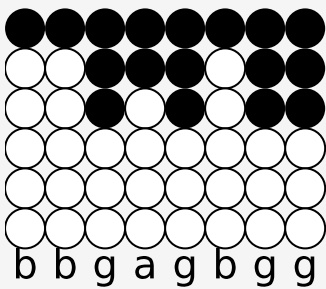
Well, it's bound to take your li-ife,



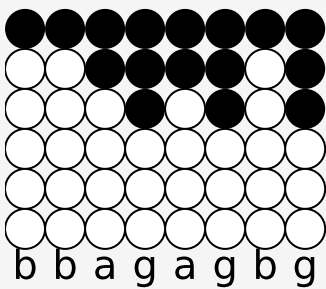
There's a bad moon on the rise.



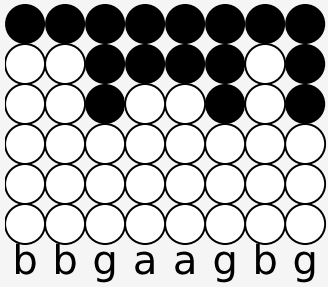
I hear hurricanes a-blowing.



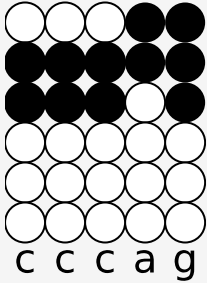
I know the end is coming soon.



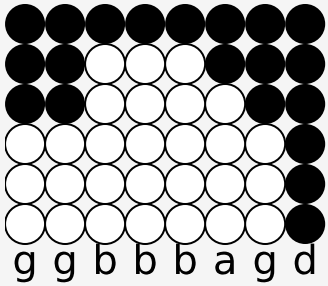
I fear rivers over flowing.



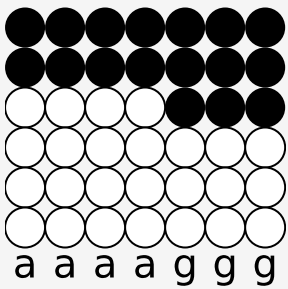
I hear the voice of rage and ruin.



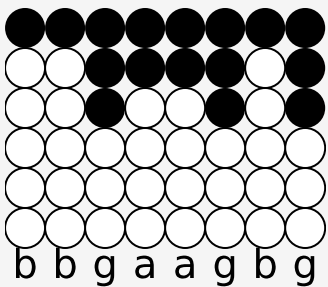
Don't go 'round tonight,



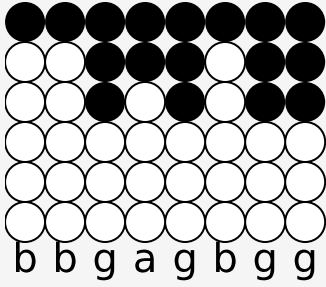
Well, it's bound to take your li-ife,



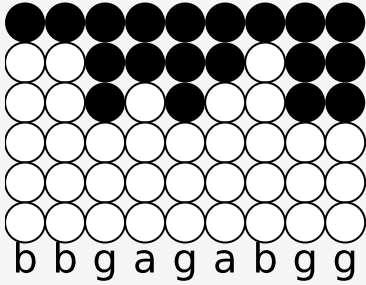
There's a bad moon on the rise.



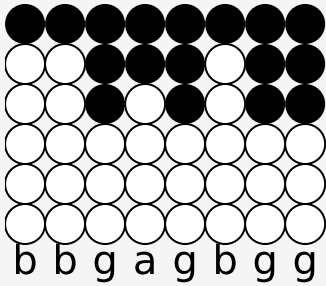
Hope you got your things together.



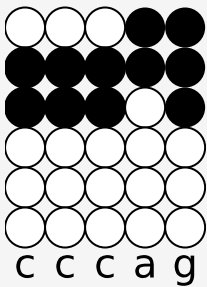
Hope you are quite prepared to die.



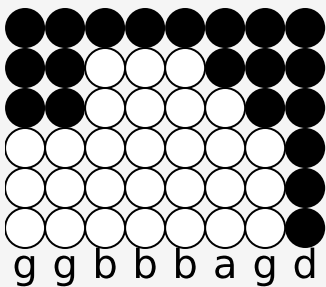
Looks like we're in for nasty weather.



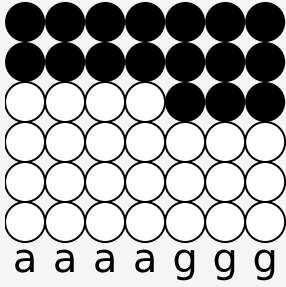
One eye is taken for an eye.



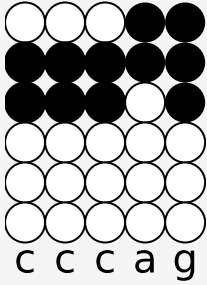
Don't go 'round tonight,



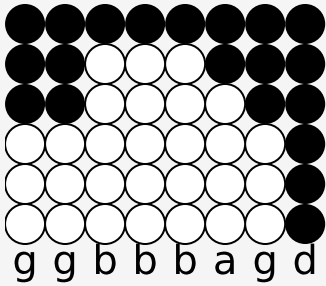
Well, it's bound to take your li-ife,



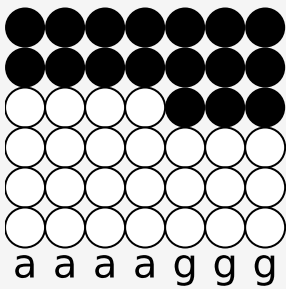
There's a bad moon on the rise.



Don't go 'round tonight,



Well, it's bound to take your li-ife,



There's a bad moon on the rise.