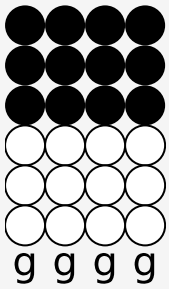
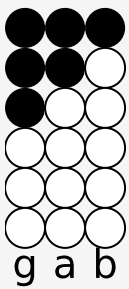


Tin whistle tabs for: Boss Of Me

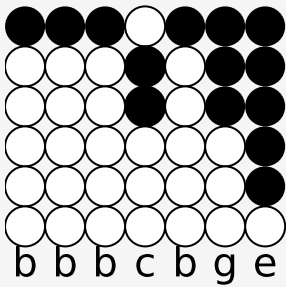
Author/Performer: Malcolm in the Middle



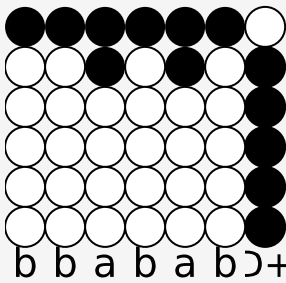
Yes, no, maybe



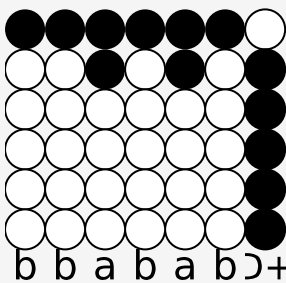
I don't know



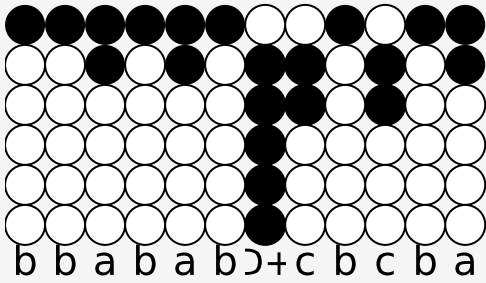
Can you repeat the question?



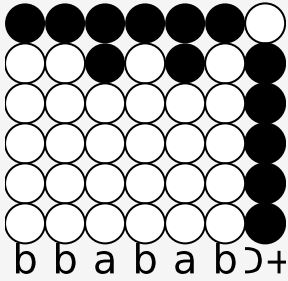
You're not the boss of me now



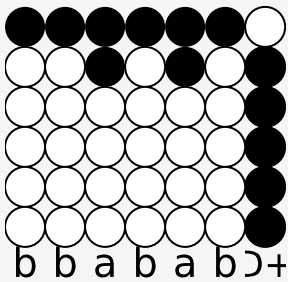
You're not the boss of me now



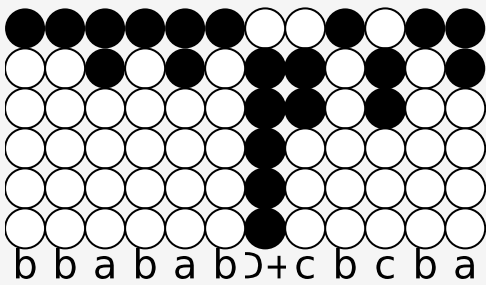
You're not the boss of me now, and you're not so big



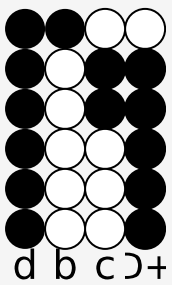
You're not the boss of me now



You're not the boss of me now



You're not the boss of me now, and you're not so big



Life is unfair,