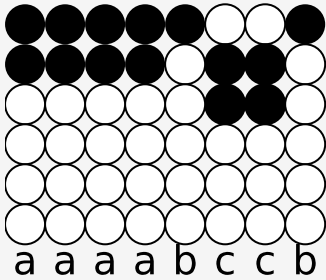


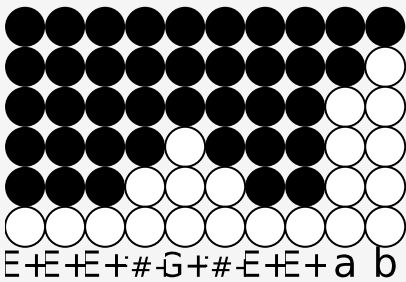
Tin whistle tabs for: Boulder To Birmingham

Author/Performer: Emmy Lou Harris

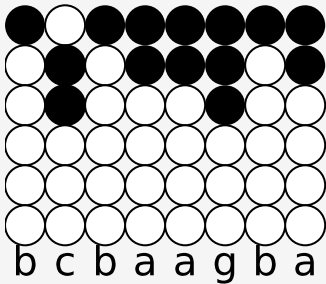
Verse 1.



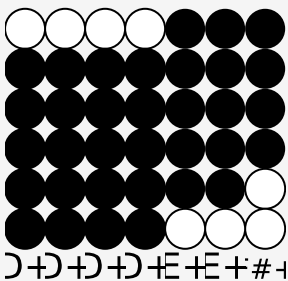
I don't want to hear a love song ~~~~~



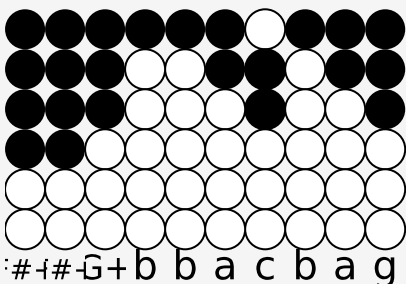
I got on this airplane just to fly ~~~~~



And I know there's life below me ~~~~~



But all that it can show me



Is the prairie and the sky~~~~~

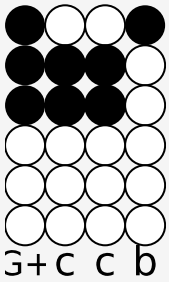
Verse 2.

And I don't want to hear a sad story

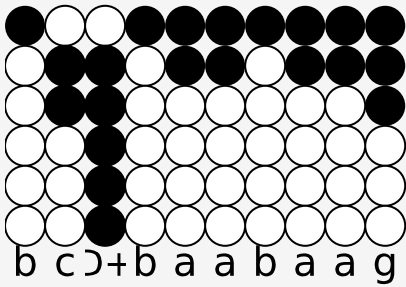
Full of heartbreak and desire

The last time I felt like this

It was in the wilderness and the canyon was on fire

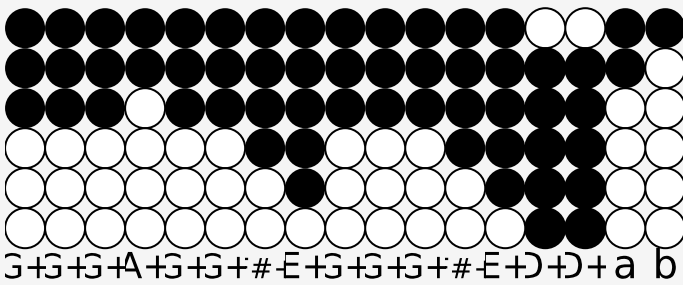


watched it burn~~~~

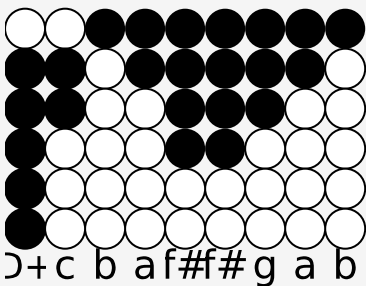


I watched it burn, I watched it burn.~~~~~

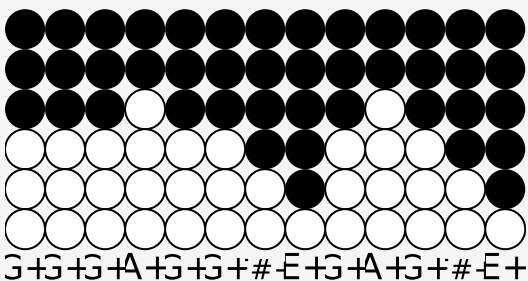
CHORUS



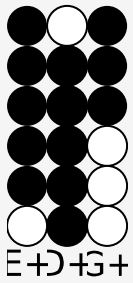
I would rock my soul~~~ in the bosom of Abraham



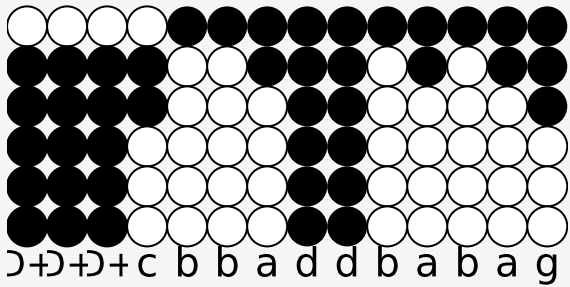
I'd hold my life in his saving grace.



I would walk all the way~~~~ from Boulder to



Birmingham



If I thought I could see, I could see your face.

Verse 3.

Well you really got me this time

And the hardest part is knowing I'll survive.

I have come