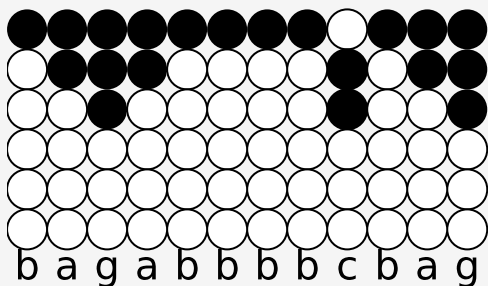
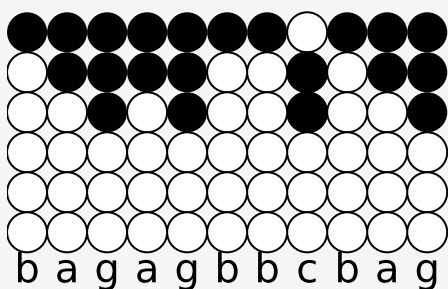


Tin whistle tabs for: Deve ser amor

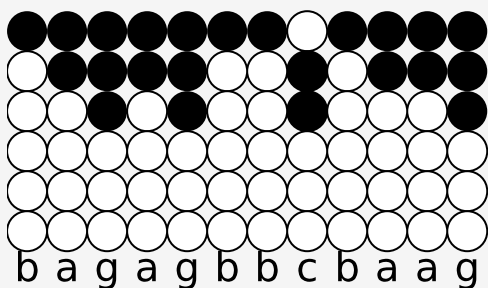
Author/Performer: Kid Abelha



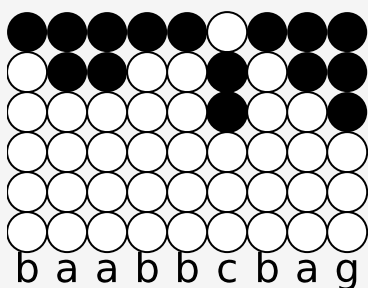
Não fosse amor não haveria planos



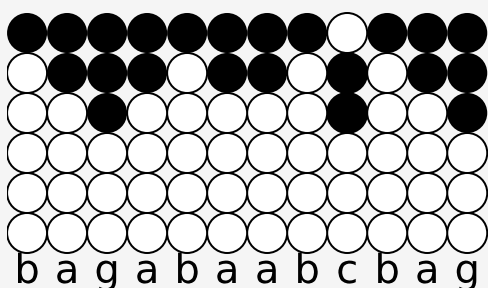
como uma onda quebraria cedo



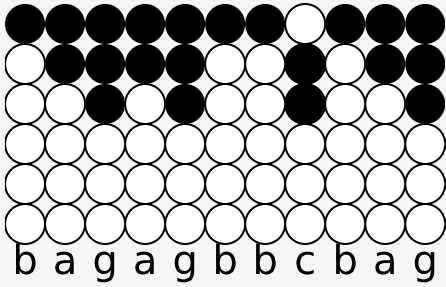
Fosse um momento não faria estragos



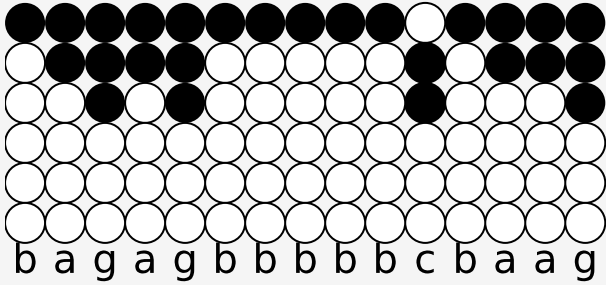
Eu não estaria no chão



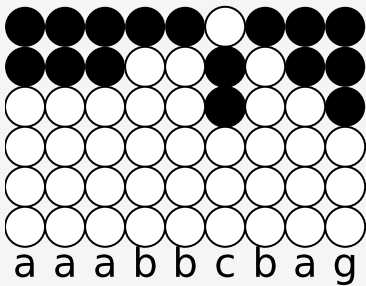
Não fosse amor não causaria medo



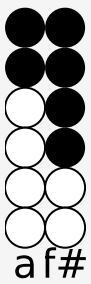
feito um brinquedo cansaria logo



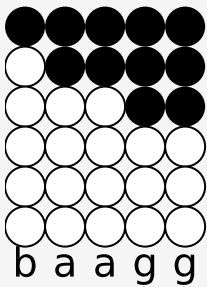
Fosse ilusão não traria tanta saudade



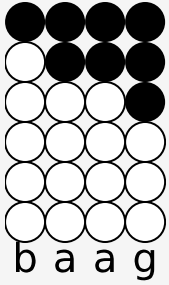
E eu não choraria no chão



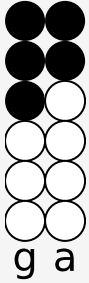
Então



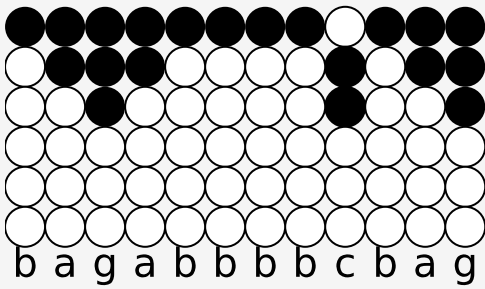
Deve ser amor



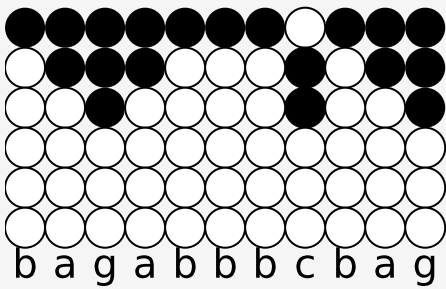
Deve ser



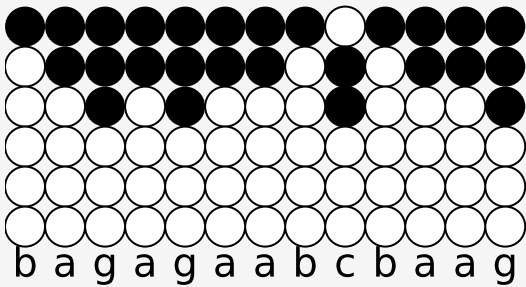
Amor



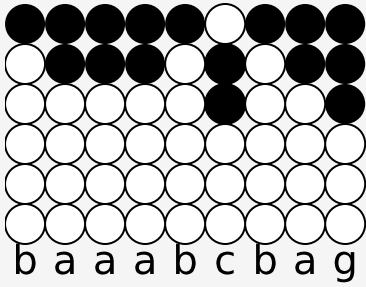
Não fosse amor não duraria tanto



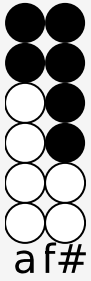
a chama de um banho-maria brando



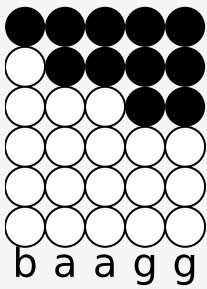
Fosse passado não passaria corrente



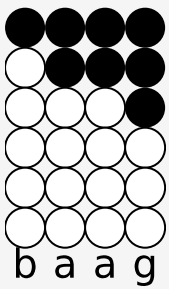
E eu não chamaria de amor



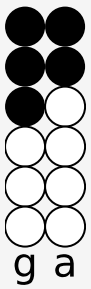
Eu não



Deve ser amor



Deve ser



Amor