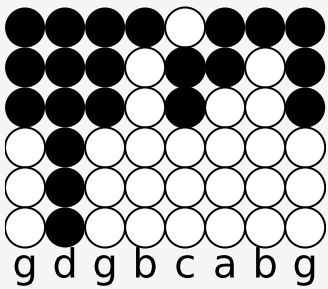
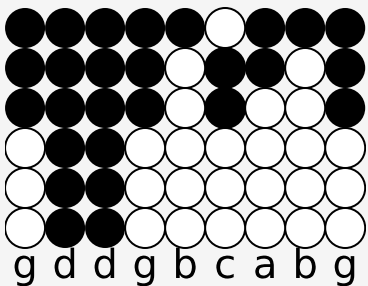


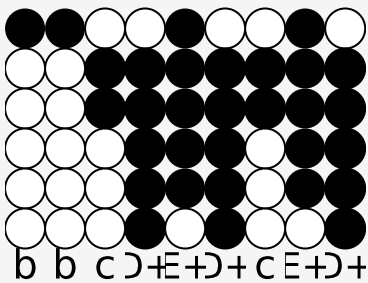
Tin whistle tabs for: Ding Dong Bell



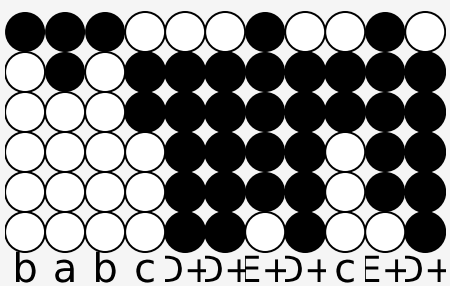
Ding, dong bell, Pussy's in the well.



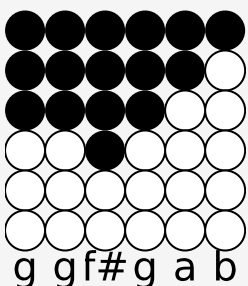
Who put her in? Little Tommy Lin.



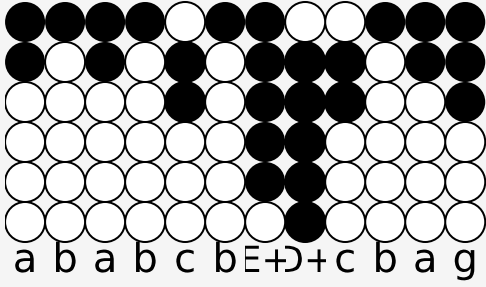
Who pulled her out? Little Tommy Stout.



Naughty boy was that to drown poor pussy cat



Who ne'er did any harm



But killed all the mice in his fathers barn.

Source: <https://simpletinwhistle.com>