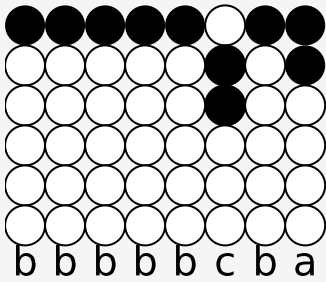
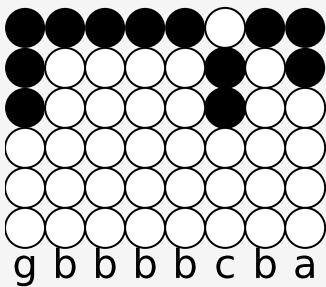


Tin whistle tabs for: Don't Cry Daddy

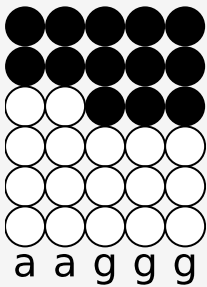
Author/Performer: Elvis Presley



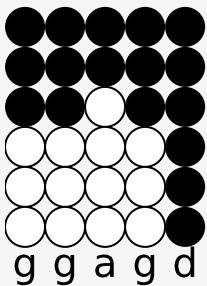
Today I stumbled from my bed



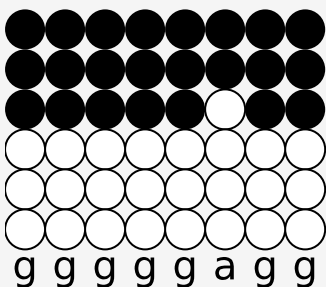
with thunder crashing in my head



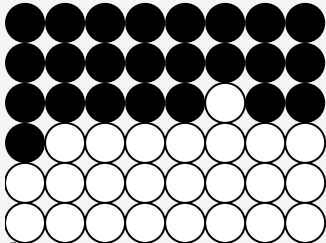
my pillow still wet



from last nights te-ars.

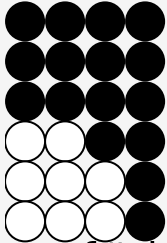


And as I think of giving up



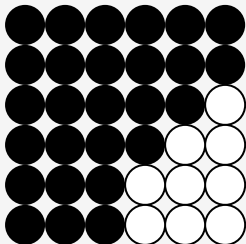
f# g g g g a g g

a voice inside my coffee cup



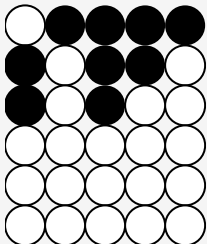
g g f# d

kept crying out



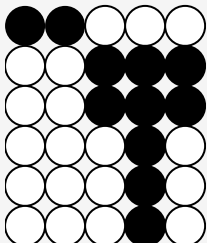
d d d f# g a

and ringing in my ears;



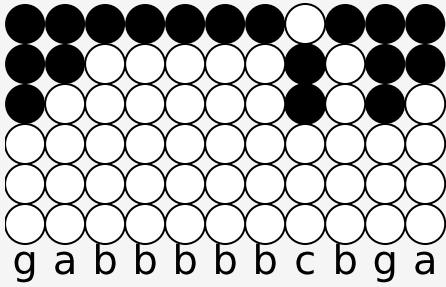
c b g a b

Don't Cr-y Daddy.

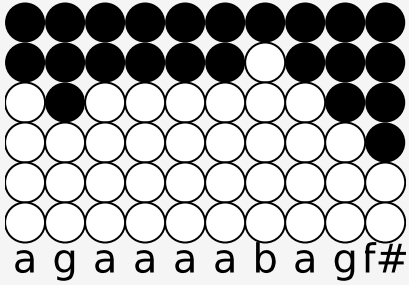


b b c D+ c

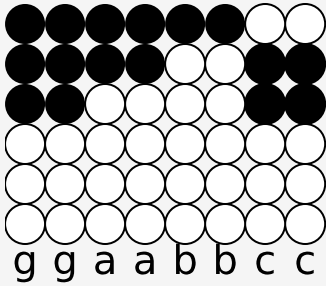
Daddy please don't cry.



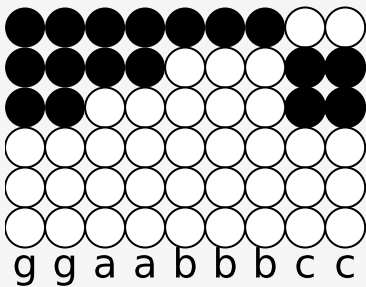
Daddy you've still got me and little Tommy,



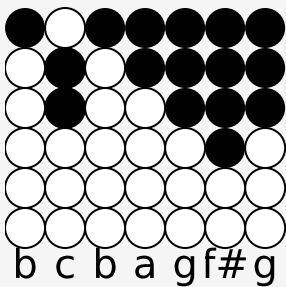
together we'll find a brand new Mommy.



Daddy, daddy please laugh again.

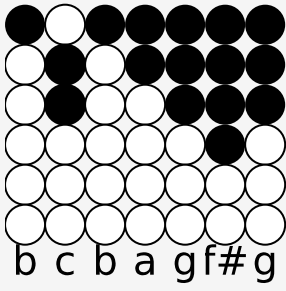


Daddy ride us on your back again.



Oh da-ad-dy please don't cry.
 Why are children always first
 to feel the pain and hurt the worst
 it's true but somehow
 it just don't seem right.

Cause ev'ry time I cry I know
it hurts my little children so
I wonder, will it be the same tonight.



Oh da-ad-dy, please don't cry.

Source: <https://simpletinwhistle.com>