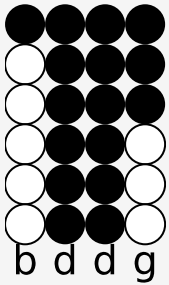


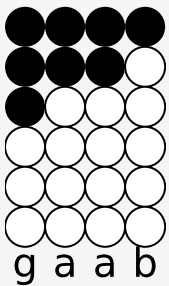
# Tin whistle tabs for: Erie Canal

Erie Canal

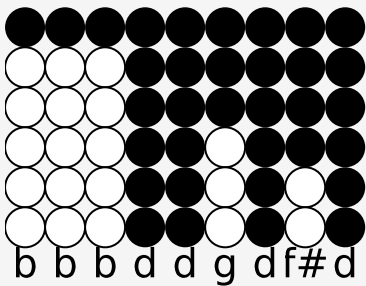
Verse 1:



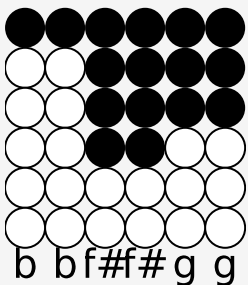
I've got a mule,



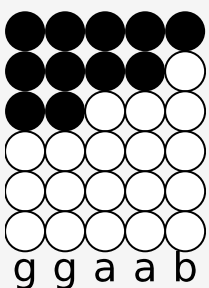
Her name is Sal.



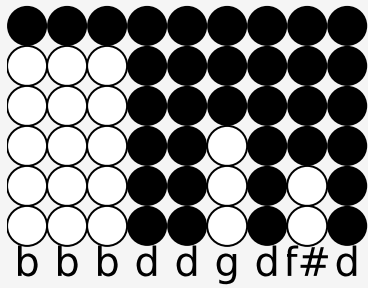
Fif-teen miles on the Er-ie Ca-nal.



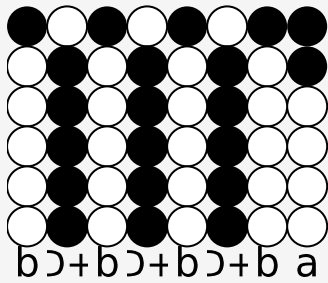
She's a good old work-er,



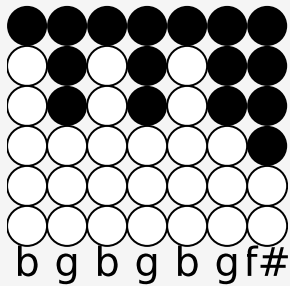
and a good old pal,



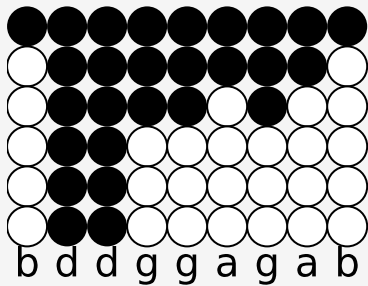
fif-teen miles on the Er-ie Ca-nal.



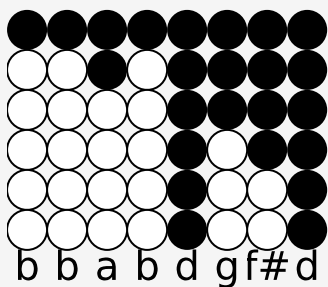
We've hauled some bar-ges in our day,



filled with lum-ber, coal, and hay,

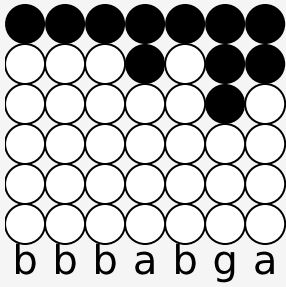


And we know ev'ry inch of the way,

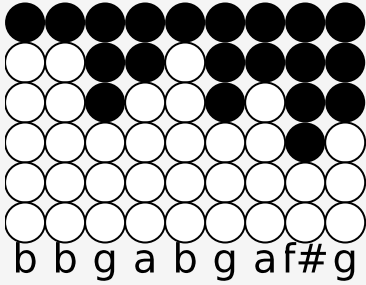


From Al-ba-ny to Buf-fa-lo.

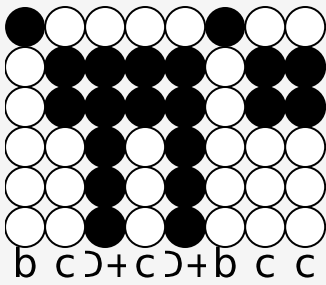
Chorus:



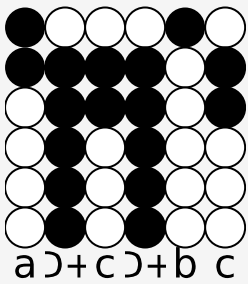
Low bridge! Ev'ry-bod-y down!



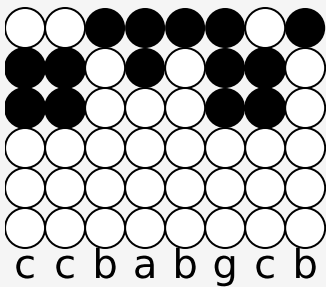
Low bridge! For we're com-in to a town!



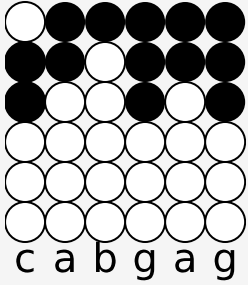
And you'll al-ways know your neigh-bor,



You'll al-ways know your pal.



If you've ev-er nav-i-gat-ed



on the Er-ie Ca-nal.

Verse 2:

oh, where would I be if I lost my pal?  
Fifteen miles on the Erie Canal.  
Oh, I'd like to see a mule good as Sal.  
Fifteen miles on the Erie Canal.  
A friend of mine once got her sore;  
Now he's got a broken jaw,  
'Cause she let fly with her iron toe  
And kicked him into buffalo.

Chorus