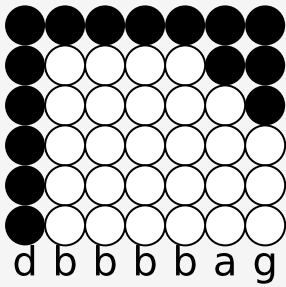
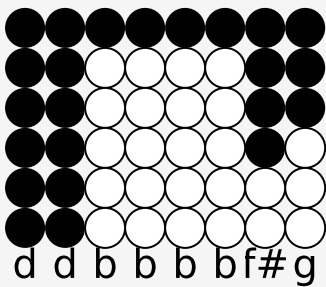


Tin whistle tabs for: Fake Plastic Trees

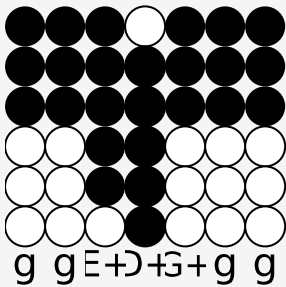
Author/Performer: Radiohead



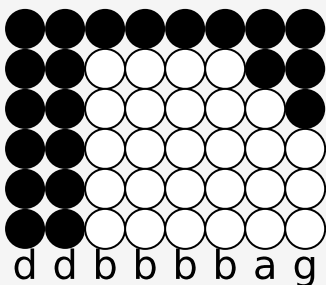
Her green plastic watering can



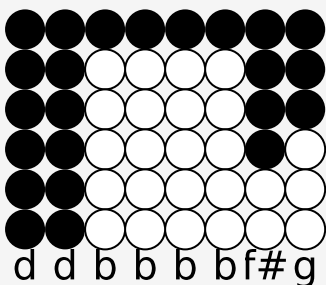
For her fake Chinese rubber plant



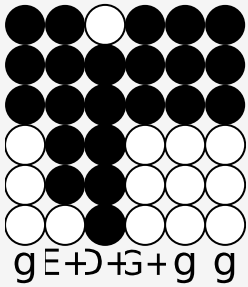
In the fake plastic earth



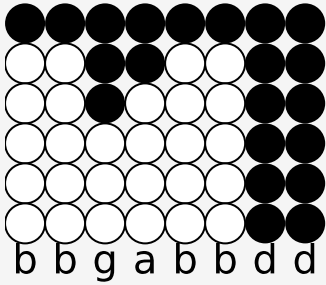
That she bought from a rubber man



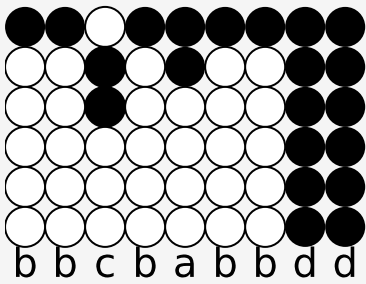
In a town full of rubber plans



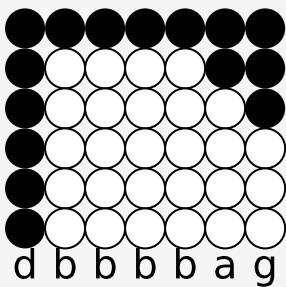
To get rid of itself



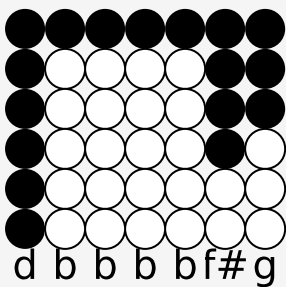
It wears her out, it wears her out



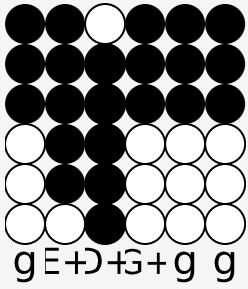
It wears her out, it wears her out



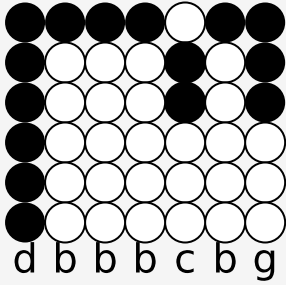
She lives with a broken man



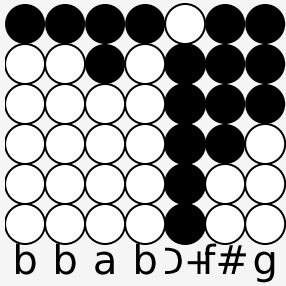
A cracked polystyrene man



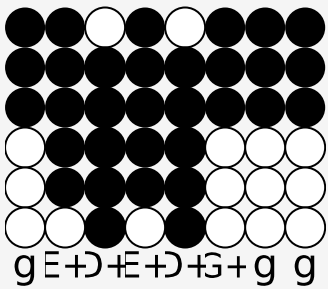
Who just crumbles and burns



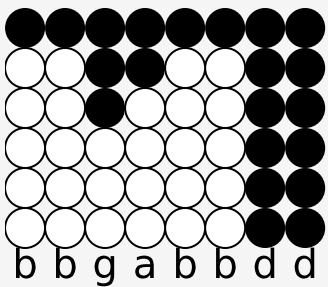
He used to do surgery



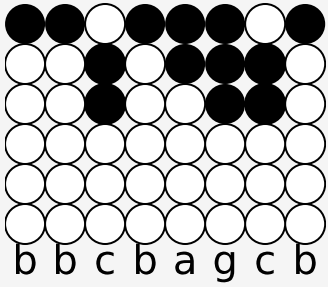
For girls in the eighties



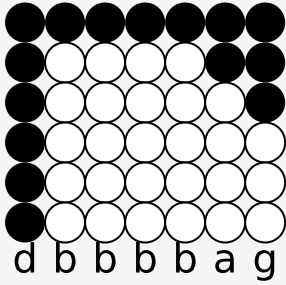
But gravity always wins



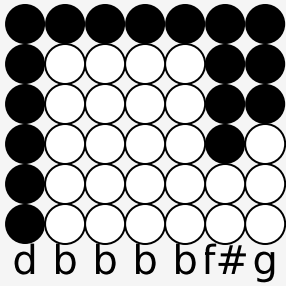
It wears him out, it wears him out



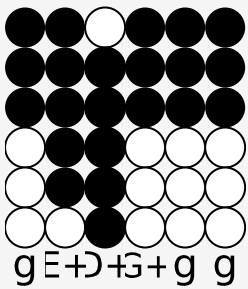
It wears him out, it wears



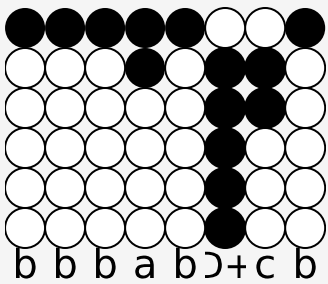
She looks like the real thing



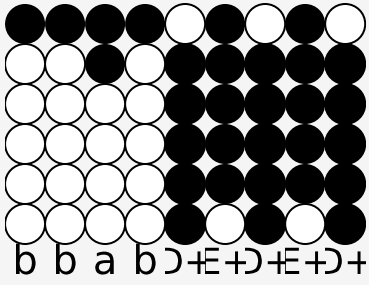
She tastes like the real thing



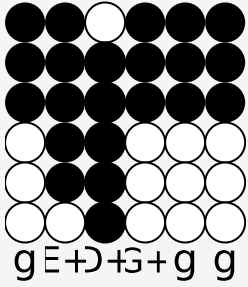
My fake plastic love



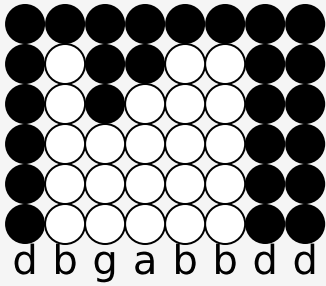
But I can't help the feeling



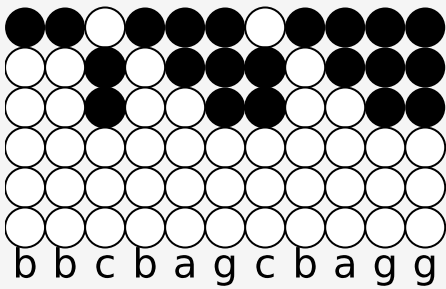
I could blow through the ceiling



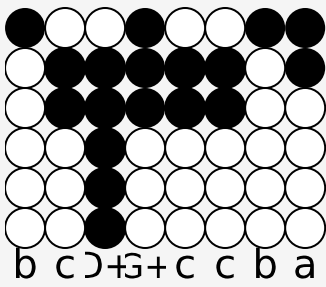
If I just turn and run



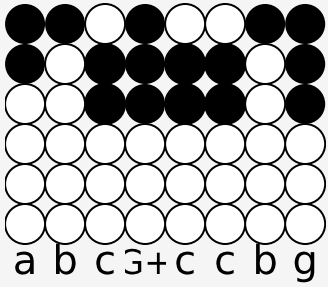
It wears me out, it wears me out



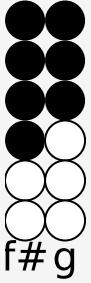
It wears me out, it wears me out



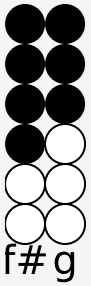
If I could be who you wanted



If I could be who you wanted



All the time...



All the time...