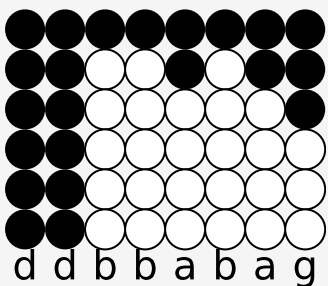
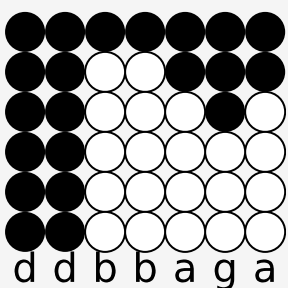


Tin whistle tabs for: Friends

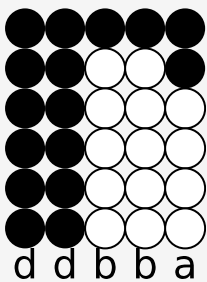
Author/Performer: Brian Fitzgerald



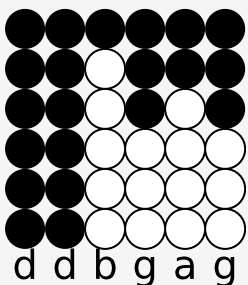
Well im go-ing to the sta-ble



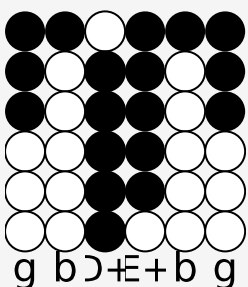
Gon-na sad-dle up a horse



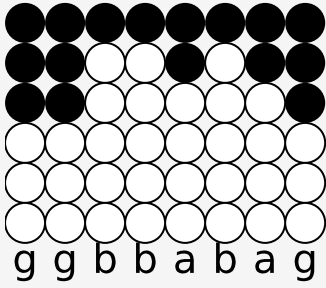
Then I'll ride my horse



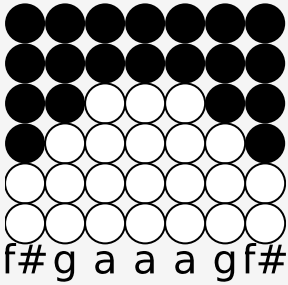
All a-round the race-course



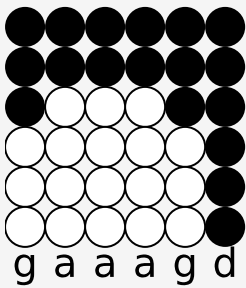
And if he's a win-ner



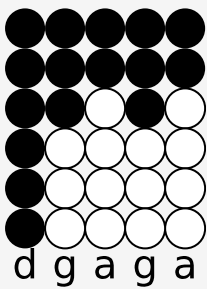
Then I'll take him out to din-ner



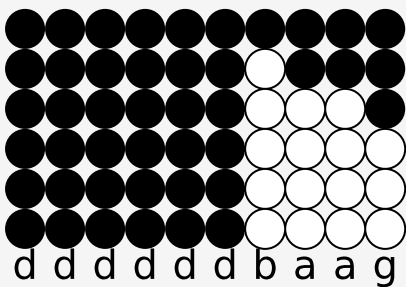
We'll have oats, hay, bran and chaff



We'll talk, joke sing and laugh



And we wont go home



Till the mid-dle of the next af-ter-noon