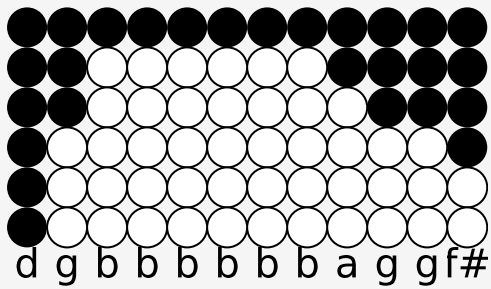
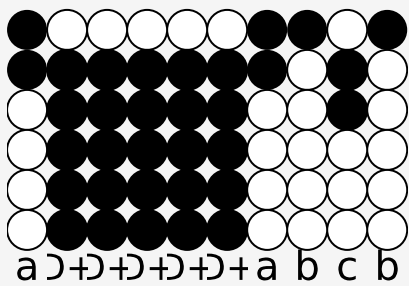


# Tin whistle tabs for: Galway Bay

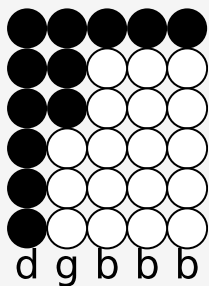
Author/Performer: Daniel O'Donnell



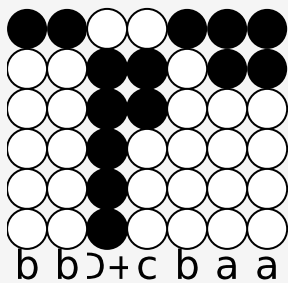
If you ev-er, go a-cross, the sea, to Ire-land,



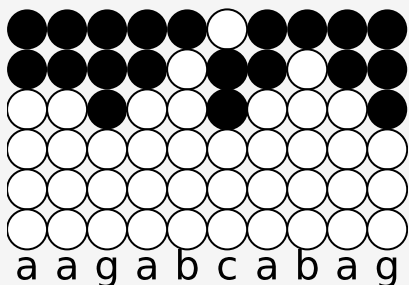
Then, may-be, at the clo-sing, of the day,



You will, sit and watch,



The moon rise, ov-er Clad-dagh,



And see, the sun go down, on Gal-way Bay.

---

Source: <https://simpletinwhistle.com>