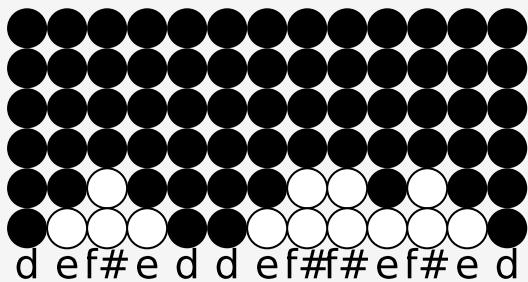


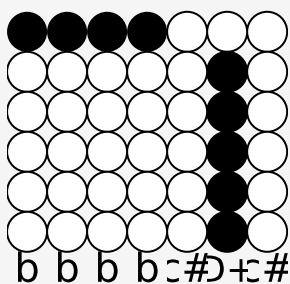
Tin whistle tabs for: Galway Girl

Genre: folk

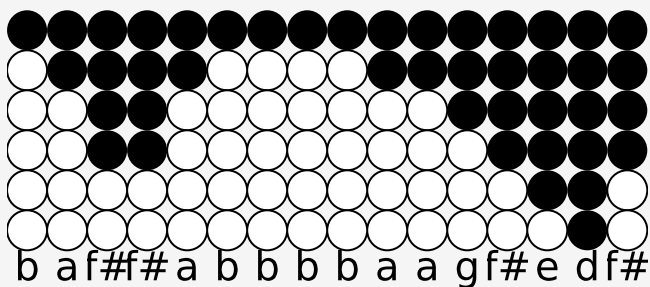
Author/Performer: Steve Earle



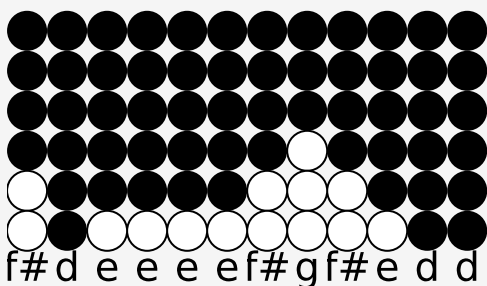
Well, I took a stroll on the old long walk



Of a day -i-ay-i-ay



I met a little girl and we stopped to talk



Of a fine soft day -i-ay-i-ay

Interlude

f# a b b b b b a b c# D+ b a a b a g f# e e e e e f# a b

b b a a a g f# e d f# # d e e e e f# g f# e d d

Chorus

D+ D+ D+ b a g g g g e f# e d

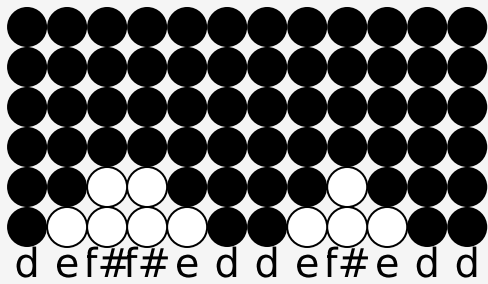
And I ask you, friend, what's a fella to do

d e f# f# e d d e f# e d d

'Cause her hair was black and her eyes were blue

D+ D+ D+ b a g g g g e f# e d

And I knew right then I'd be takin' a whirl



'Round the Salthill Prom with a Galway girl
We were halfway there when the rain came down
Of a day -i-ay-i-ay
And she asked me up to her flat downtown
Of a fine soft day -i-ay-i-ay
And I ask you, friend, what's a fella to do
'Cause her hair was black and her eyes were blue
So I took her hand and I gave her a twirl
And I lost my heart to a Galway girl
When I woke up I was all alone
With a broken heart and a ticket home
And I ask you now, tell me what would you do
If her hair was black and her eyes were blue
I've traveled around I've been all over this world
Boys I ain't never seen nothin' like a Galway girl