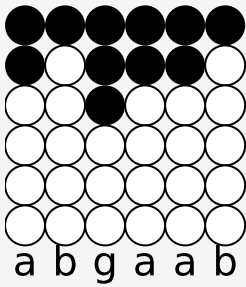
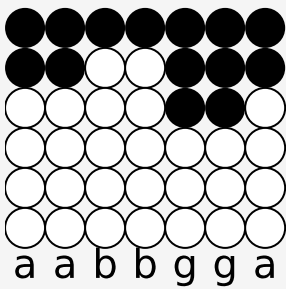


Tin whistle tabs for: Grapefruit juicy-fruit

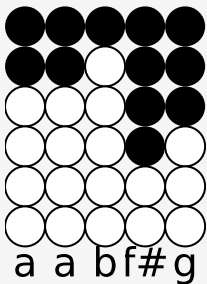
Author/Performer: Jimmy Buffett



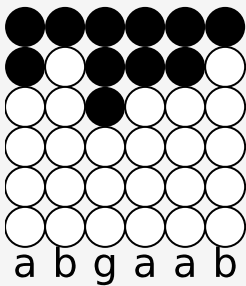
Grapefruit, A bathin' suit



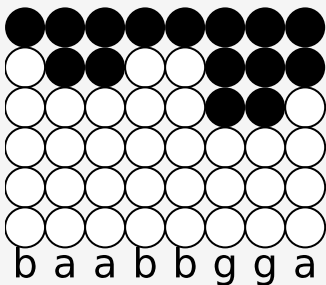
Chew a little Juicy Fruit



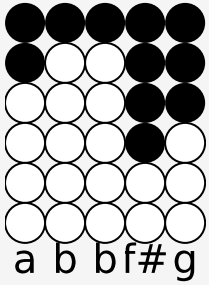
Wash away the night



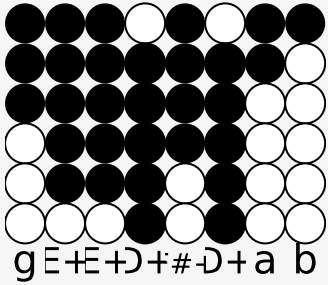
Drive in, You guzzle gin



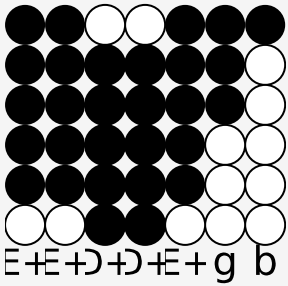
Commit a little mortal sin



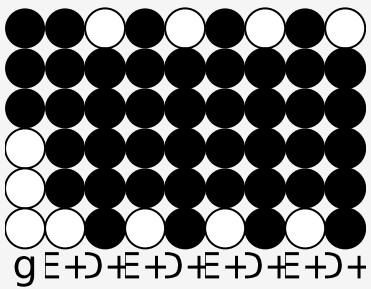
It's good for the soul



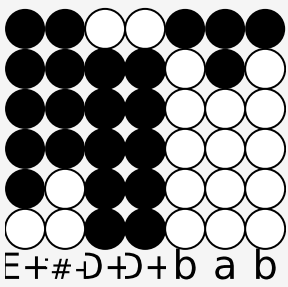
And oh it gets so da** lonely



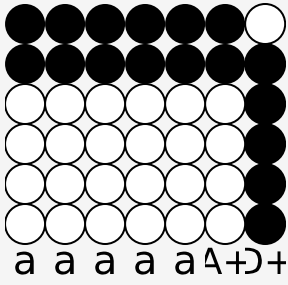
When you're on a plane alone



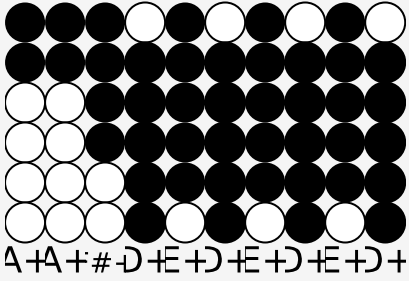
And if I had the money, honey



I'd strap you in beside me



And never ever leave you



Leave you at home all alone and cryin'