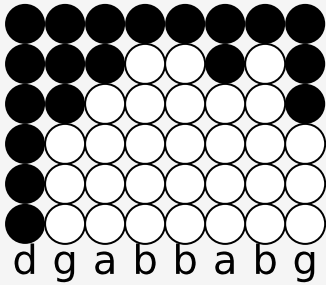
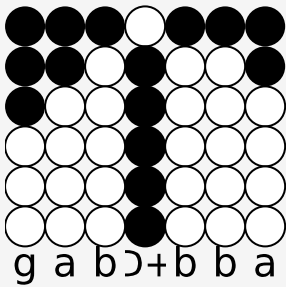


Tin whistle tabs for: How Can I Keep From Singing?

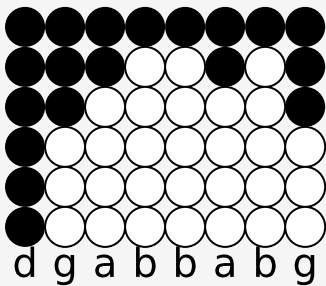
Author/Performer: Robert Lowry



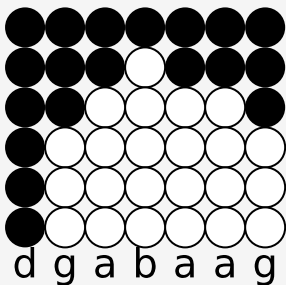
My life flows on in endless song;



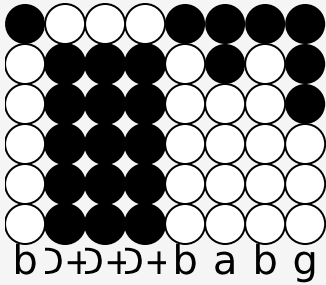
Above earth's lamentation



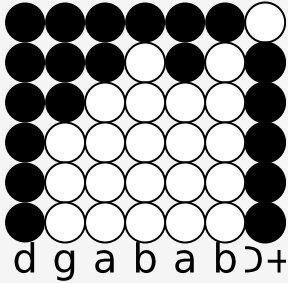
I hear the sweet though far off hymn



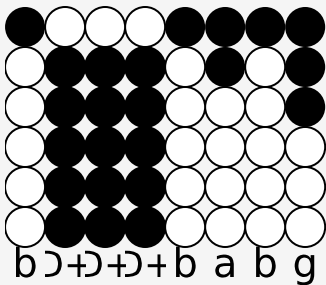
That hails a new creation:



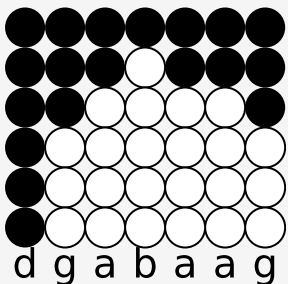
Through all the tumult and the strife



I hear the music ringing;



It finds an echo in my soul



How can I keep from singing?

What though my joys and comforts die?

The Lord my Savior liveth;

What though the darkness gather round!

Songs in the night He giveth:

No storm can shake my inmost calm

While to that refuge clinging;

Since Christ is Lord of Heav'n and earth,

How can I keep from singing?

I lift mine eyes; the cloud grows thin;

I see the blue above it;

And day by day this pathway smoothes

Since first I learned to love it:

The peace of Christ makes fresh my heart,

A fountain ever springing:

All things are mine since I am His

How can I keep from singing?

Source: <https://simpletinwhistle.com>