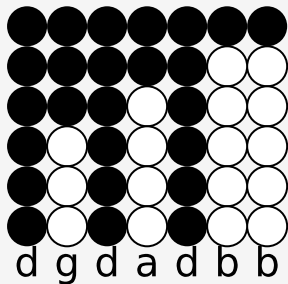


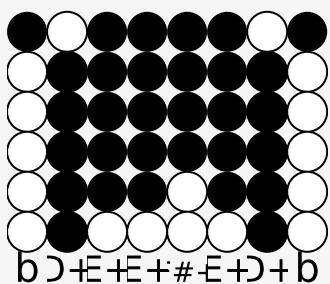
Tin whistle tabs for: How To Handle A Woman

Author/Performer: Richard Burton

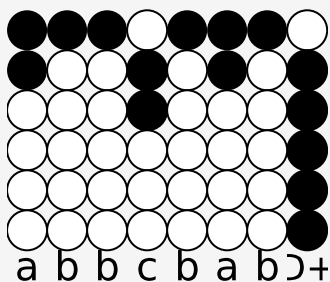
"How to handle a woman?"



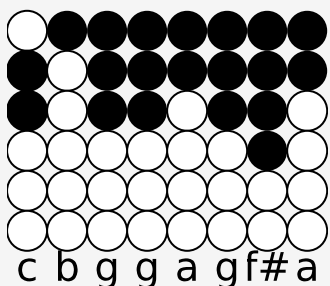
There's a way," said the wise old man,



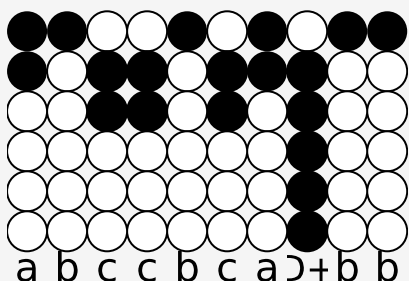
"A way known by ev'ry woman



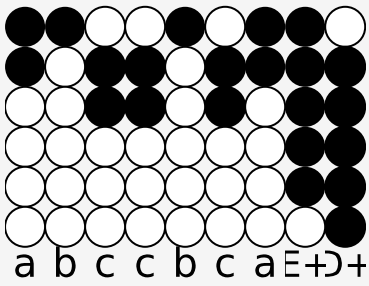
Since the whole rigmarole began."



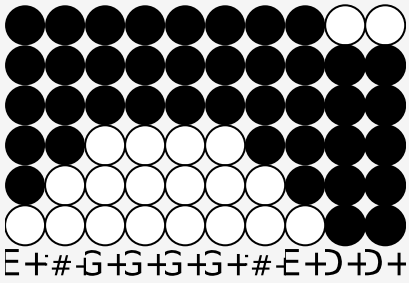
"Do I flatter her?" I begged him answer.



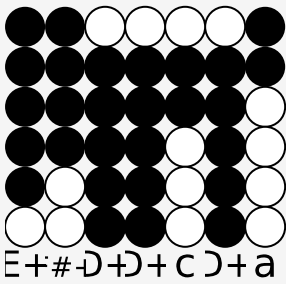
"Do I threaten or cajole or plead?"



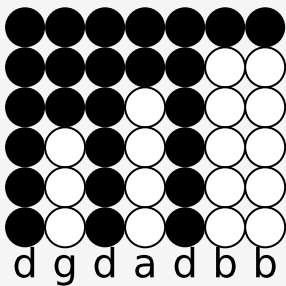
Do I brood or play the gay romancer?"



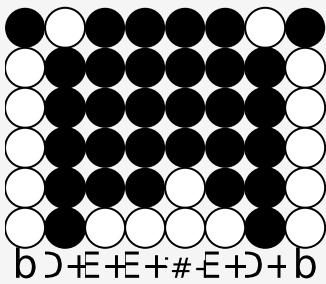
Said he, smiling: "No indeed.



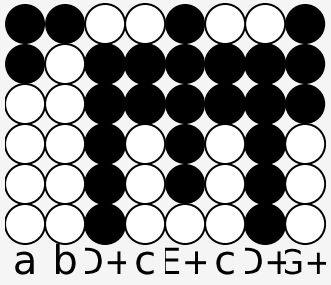
How to handle a woman?



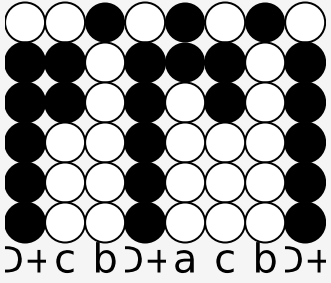
Mark me well, I will tell you, sir:



The way to handle a woman



Is to love her...simply love her...



Merely love her, love her, love her."

