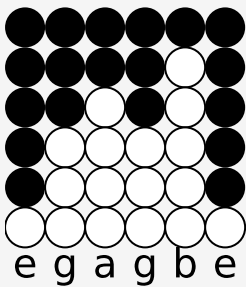
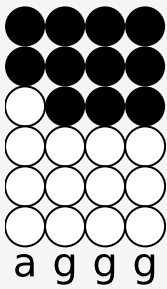
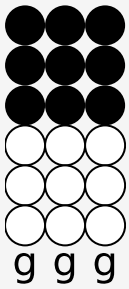
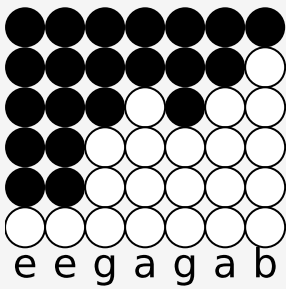


# Tin whistle tabs for: How You Like Me Now

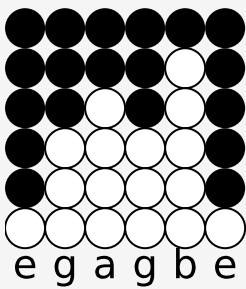
Author/Performer: The Heavy



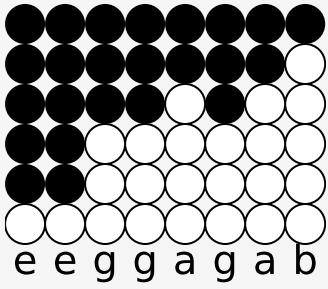
Now there was a time



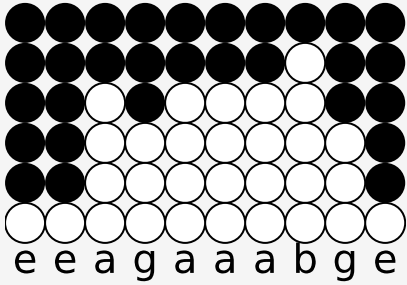
When you loved me so



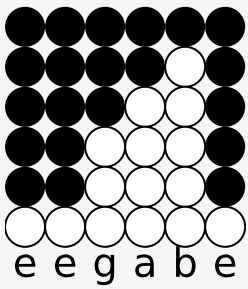
I could have been wrong



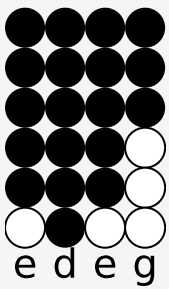
But now you needed to know



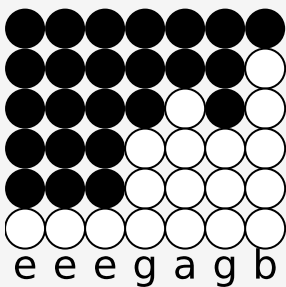
See, I've been a bad, bad, bad, bad man



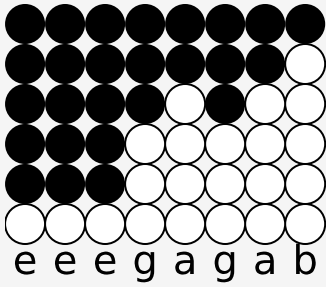
And I'm in deep,



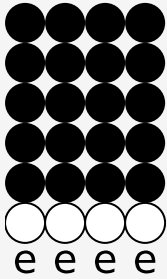
Yes I am



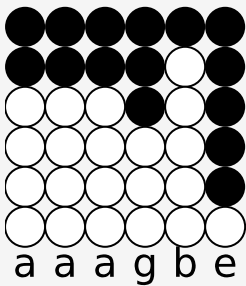
I found a brand new love for this man



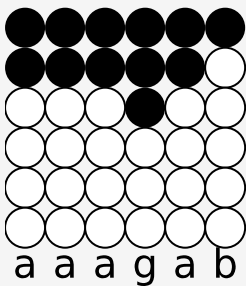
And I can't wait till you see



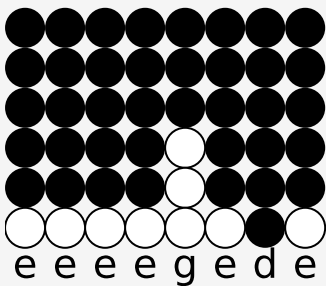
So How you like me now? x4



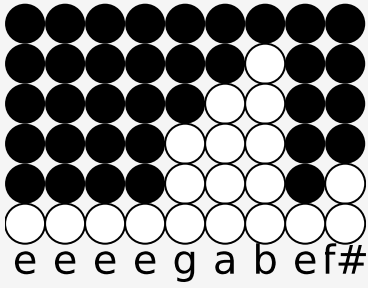
How you like me now? x3



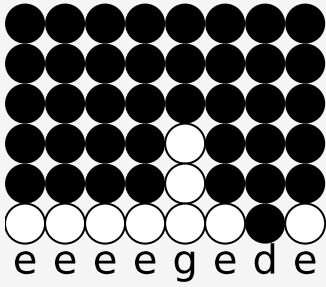
How you like me now?  
Remember the time  
When I eat you up  
You know that I wasn't lyin'  
that you can't give up  
So if I was to cheat  
on you baby would you see right through me  
If I sing a sad, sad, sad, sad song  
would you give it to me



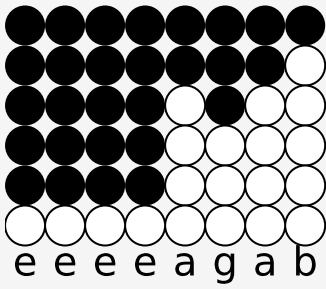
Does that make you love me baby



Does that make you want me baby



Does that make you love me baby



Does that make you want me baby