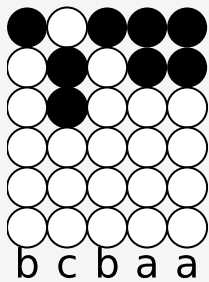
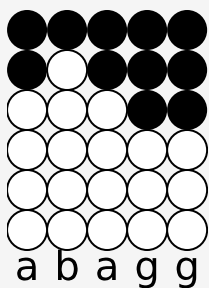


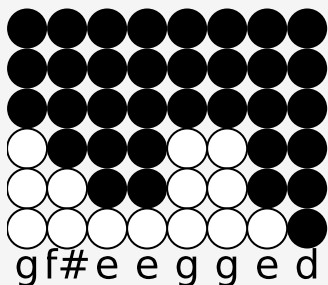
Tin whistle tabs for: I Am Thine O Lord



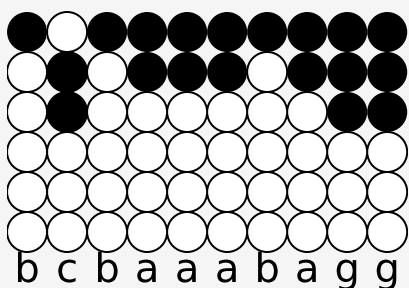
I am Thine, O Lord,



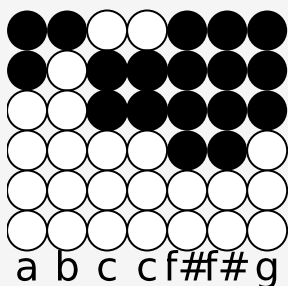
I have heard Thy voice,



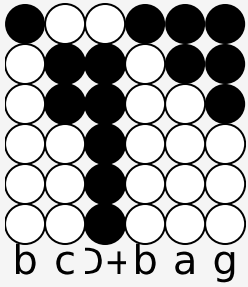
And it told Thy love t-o me;



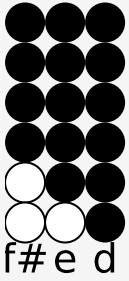
But I long to rise in the arms of faith



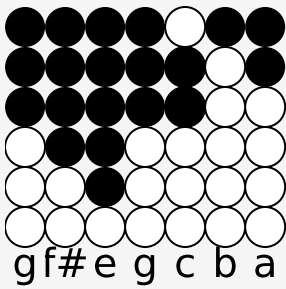
And be clos-er drawn to Thee.



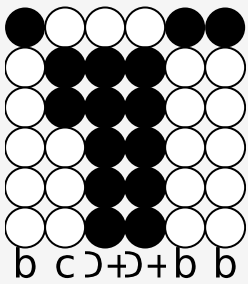
Draw me near-er, near-er,



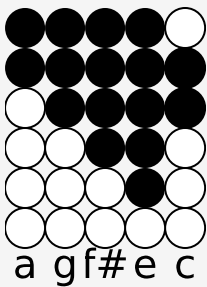
bless-ed Lord,



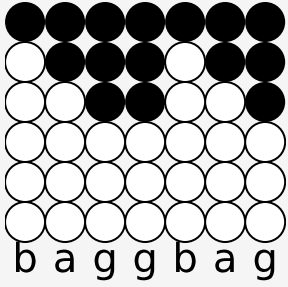
To the cross where Thou hast died;



Draw me near-er, near-er,



near-er, bless-ed Lord,



To Thy pre-cious bleed-ing side.

Source: <https://simpletinwhistle.com>