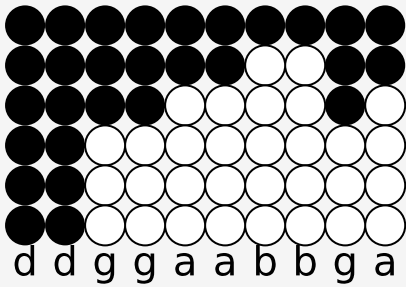
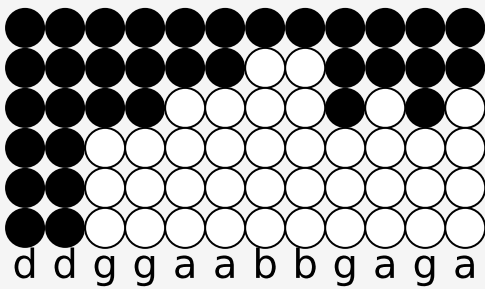


Tin whistle tabs for: I Believe I Can Fly

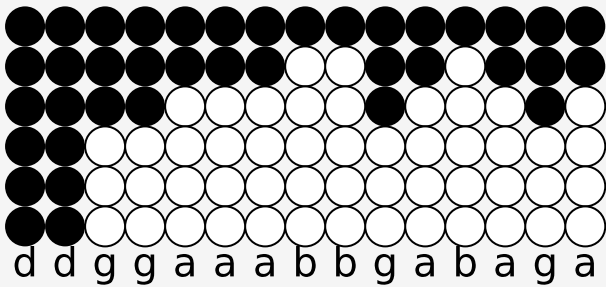
Author/Performer: ##### #####: R. Kelly



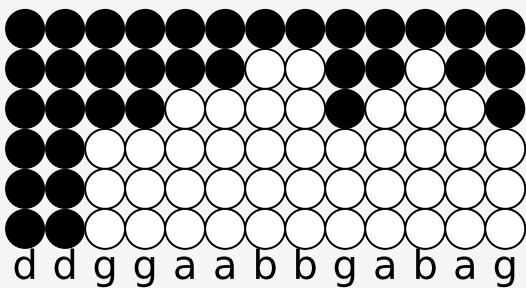
I used to think that I could not go on



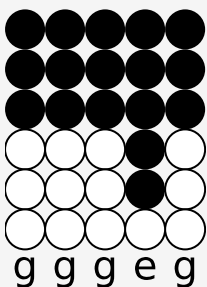
and life was nothing but an awful so-n-g



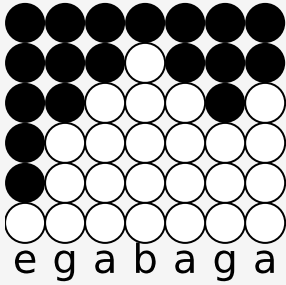
But now I know the meaning of true l-o-v-e



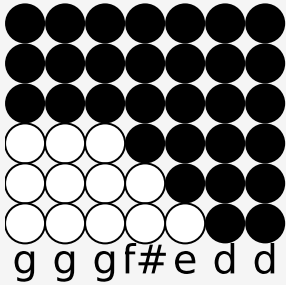
I'm leaning on the everlasting a-r-m-s



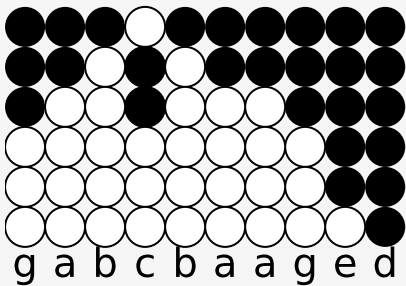
If I can see it



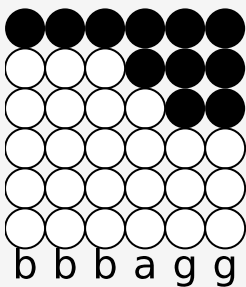
then I can d---o it



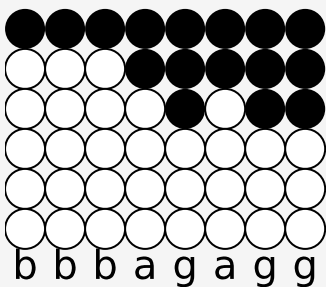
if I just believe it



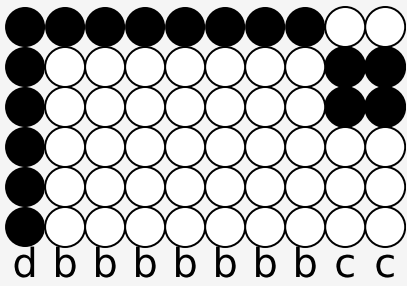
there's nothing to i-----t



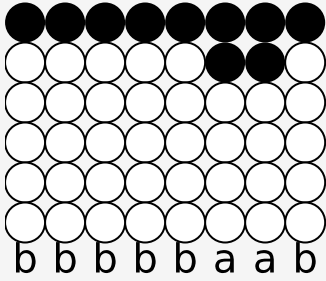
I believe I can fly



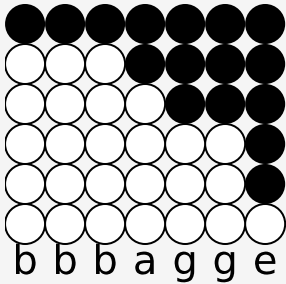
I believe I can touch the sky



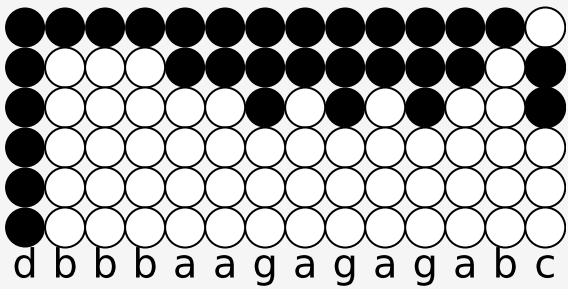
I think about it every night and day



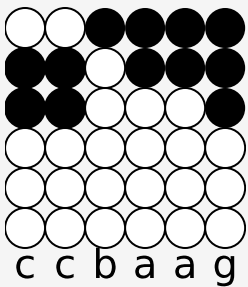
spread my wings and fly a-way



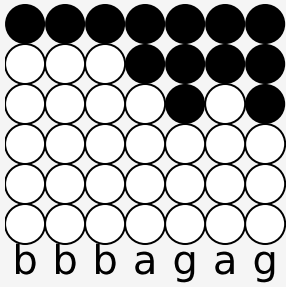
I believe I can soar



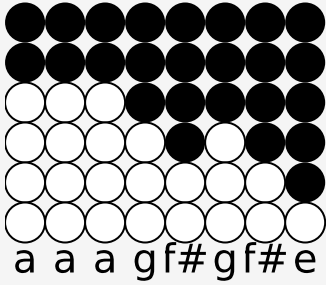
I see me running through that open d-o-o-r



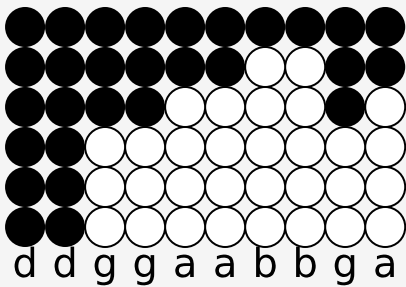
I believe I can fly



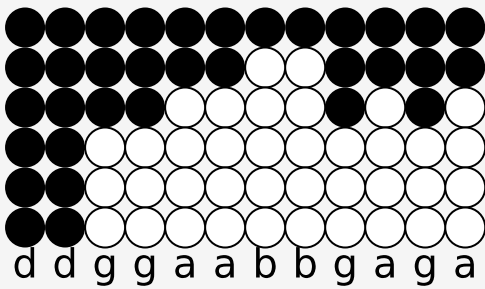
I believe I can f-ly



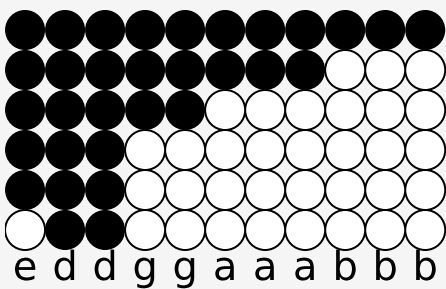
I believe I can f-l-y



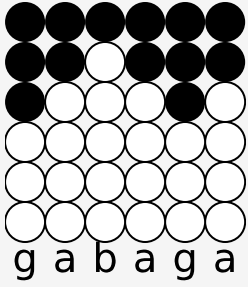
See I was on the verge of breaking down



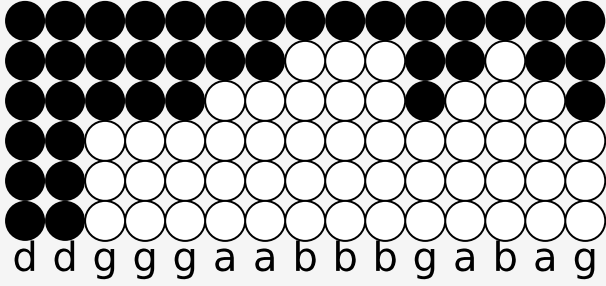
Sometimes silence can seem so l-o-u-d



There are miracles in life I mu-st



a-c-h-i-e-v-e



but first I know it starts inside of m-----e