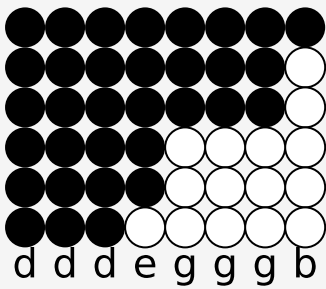
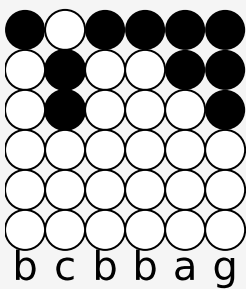


Tin whistle tabs for: I Can't Tell You Why

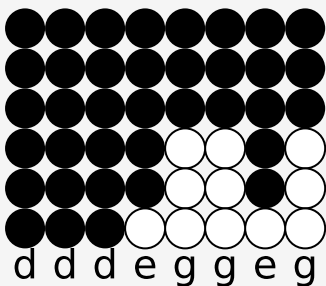
Author/Performer: The Eagles



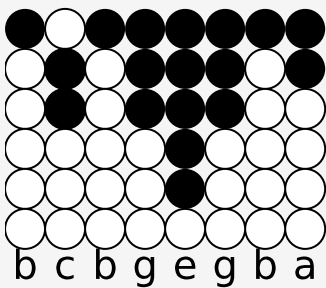
Look at us ba-by, up all night,



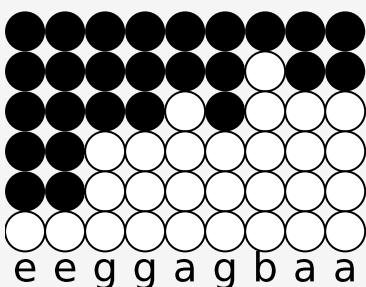
tear-in' our love a-part.



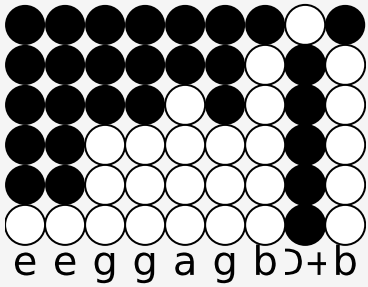
Aren't we the same two peo-ple who



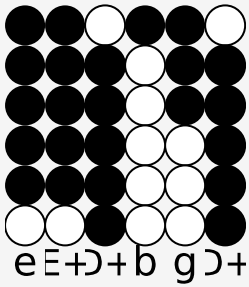
lived through years in the dark? O-h.



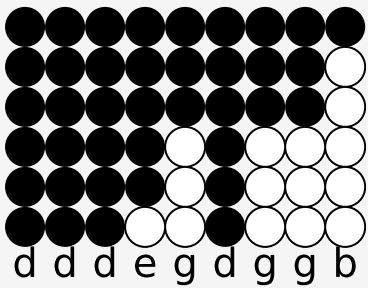
Ev-'ry time I try to walk a-way,



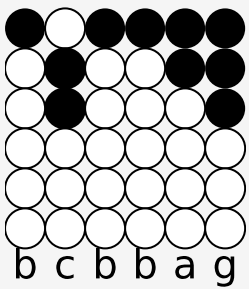
some-thin' makes me turn a-round and stay,



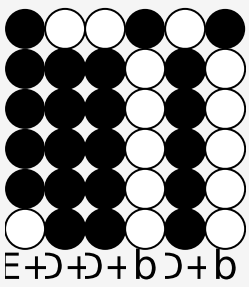
and I can't tell you why.



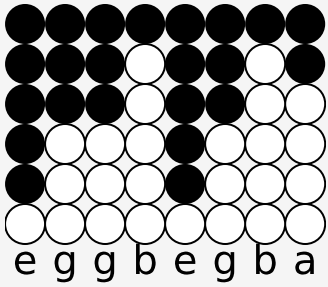
When we get cra-zy, it just ain't right.



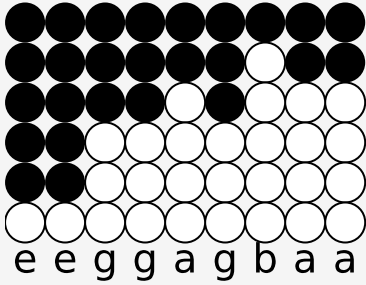
Girl I get lone-ly, too.



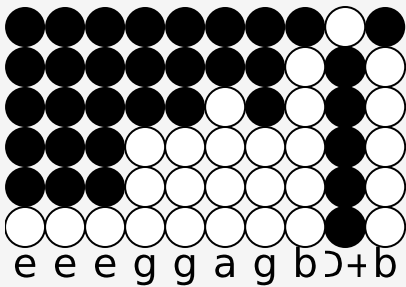
You don't have to wor-ry,



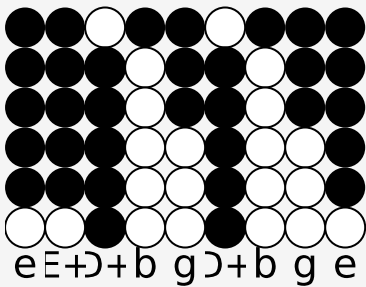
just hold on tight, 'cause I love you.



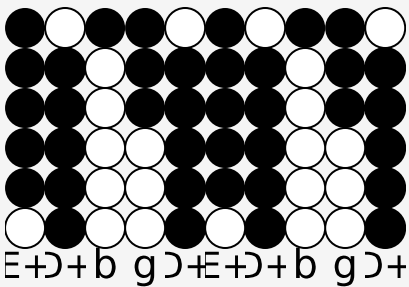
Noth-in's wrong as far as I can see.



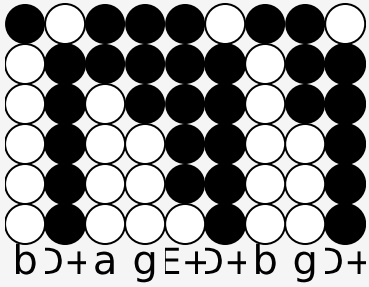
We make it hard-er then it has to be,



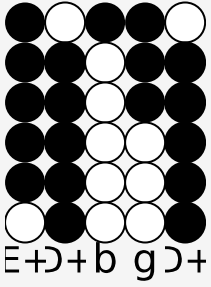
and I can't tell you why. No ba-by,



I can't tell you why. I can't tell you why.



No, no ba-by, I can't tell you why.



I can't tell you why.