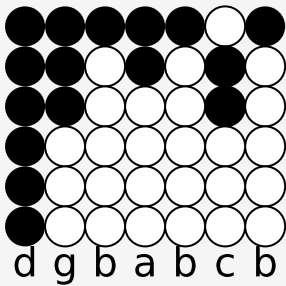
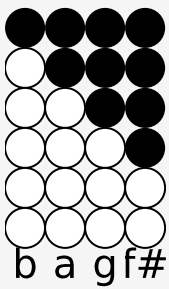


Tin whistle tabs for: I'll Never Be Lonely Again

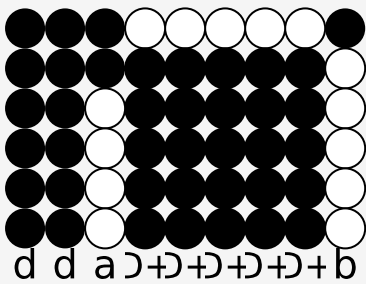
I'll Never Be Lonely Again



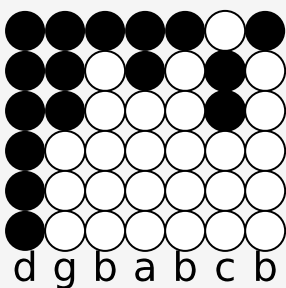
Lone-ly days and lone-ly nights



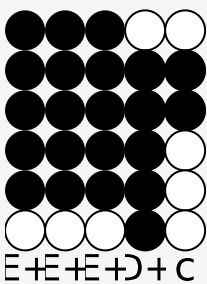
filled with des-pair,



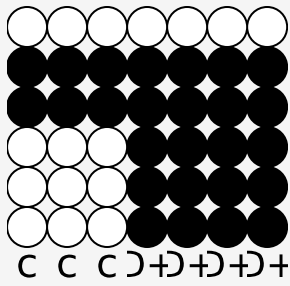
Caused me to long for some-one to care



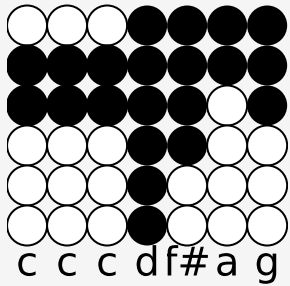
Then I heard Christ say to me



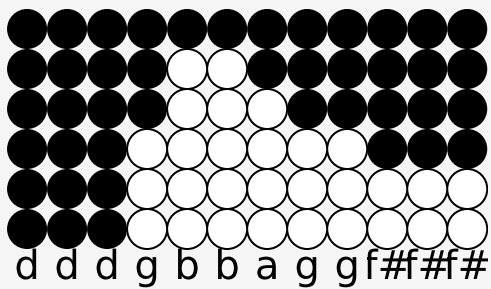
This prom-ise I've made



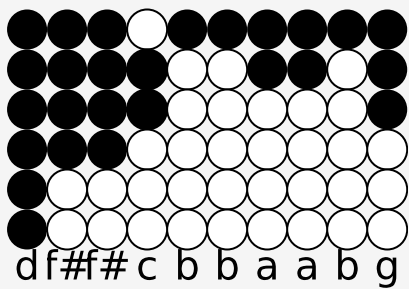
Lo I am with you now and



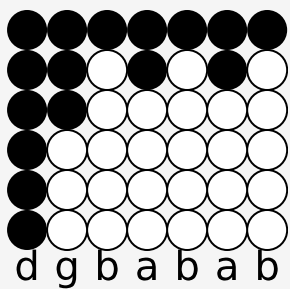
for-ev-er be not a-fraid



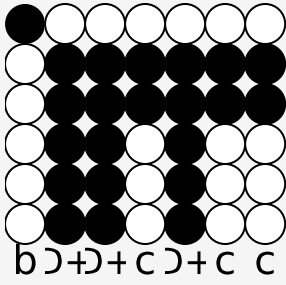
I'll nev-er be lone-ly a-gain, nev-er a-gain



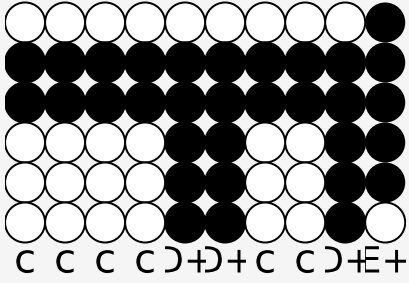
For I have o-pened my heart's door to Him



So I'll brush a-way the tears



and for-get my fool-ish fears



I'll nev-er be lone-ly a-gain nev-er

Source: <https://simpletinwhistle.com>