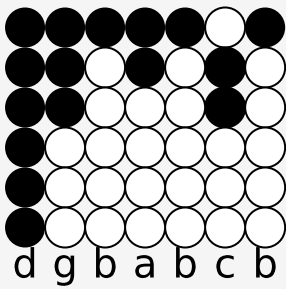
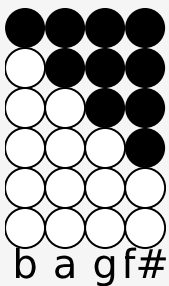


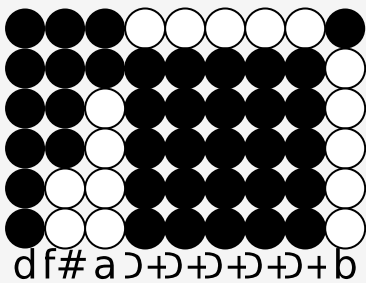
Tin whistle tabs for: I'll Never Be Lonely



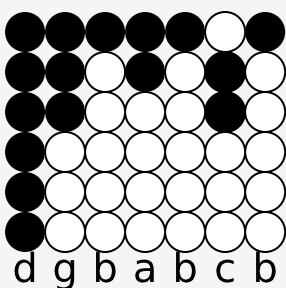
Lone-ly days and lone-ly nights,



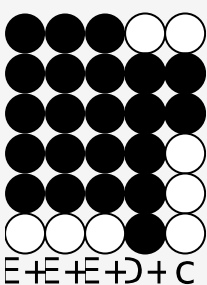
filled with des-pair,



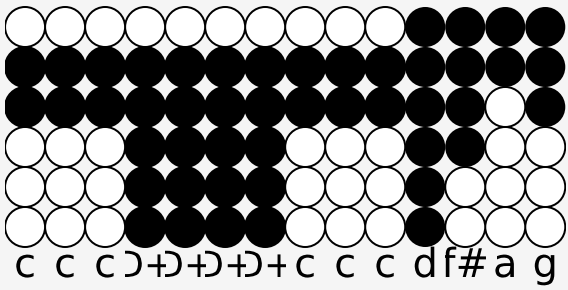
Caused me to long for some-one to care;



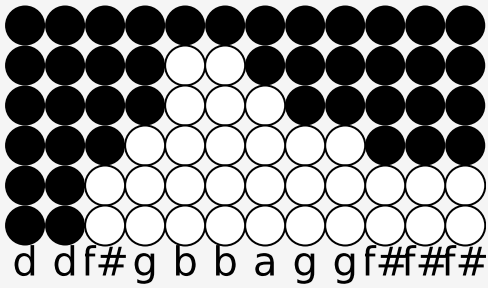
Then I heard Christ say to me:



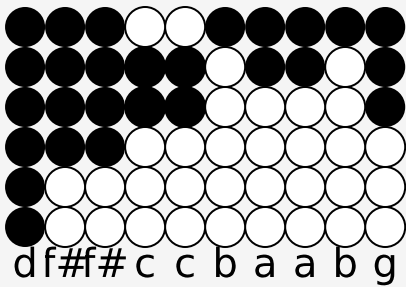
This prom-ise I've made:



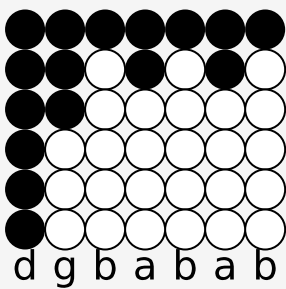
Lo! I am with you now and for-ev-er be not a-fraid.



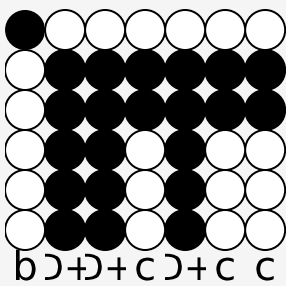
I'll nev-er be lone-ly a-gain, nev-er a-gain,



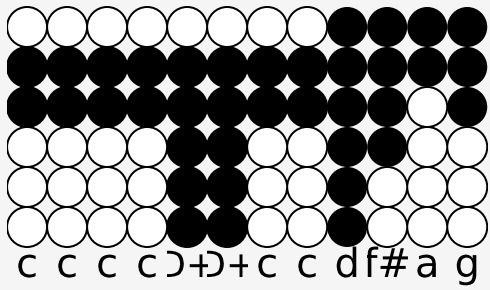
For I have o-pened my heart's door to Him;



So I'll brush a-way the tears



and for-get my fool-ish fears



I'll nev-er be lone-ly a-gain, nev-er a-gain

Source: <https://simpletinwhistle.com>