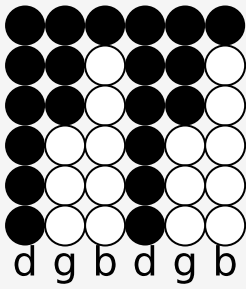
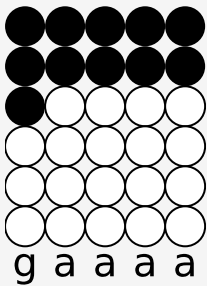


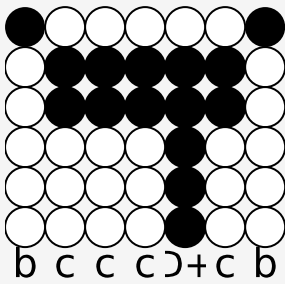
Tin whistle tabs for: Im Frühtau zu Berge



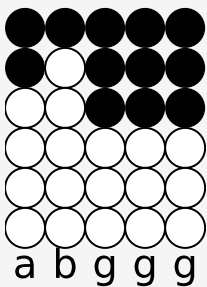
C
Im Frühtau zu Berge



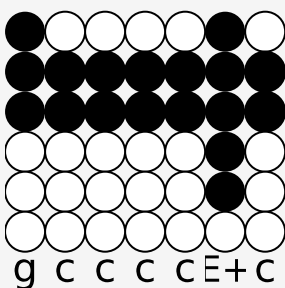
G7
wir zieh'n, fallera,



G7
es grünen die Wälder,

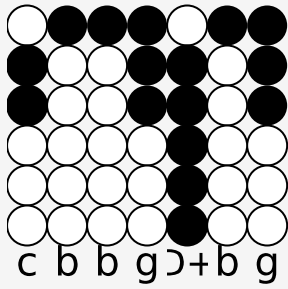


C
die Höh'n, fallera!



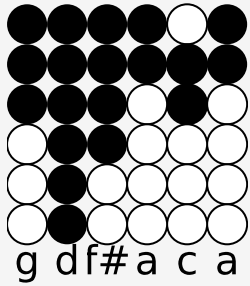
F

Wir wandern ohne Sorgen



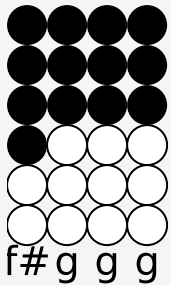
C

singend in den Morgen,



G7

noch ehe im Tale



C

die Hähne kräh'n.