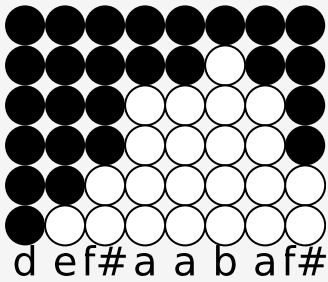
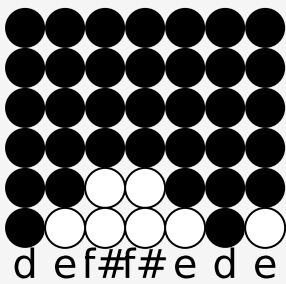


Tin whistle tabs for: Oh Susanna

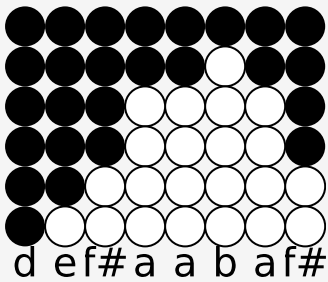
Genre: folk



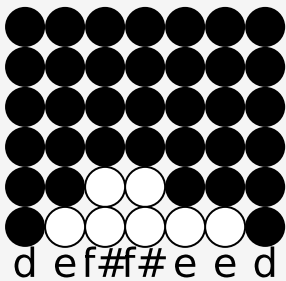
I came from Al-a-bam-a



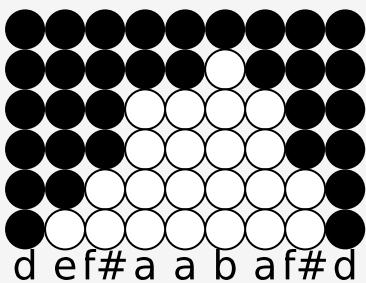
with my ban-jo on my knee;



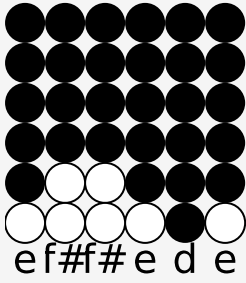
I'm goin' to Lou-'si-an-a



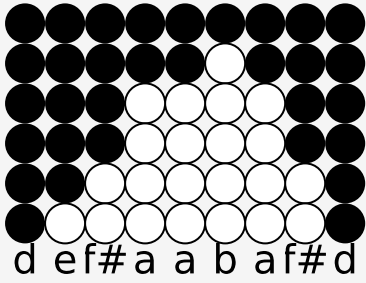
M-y true love for to see.



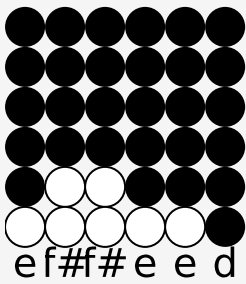
I-t rained all night the day I left



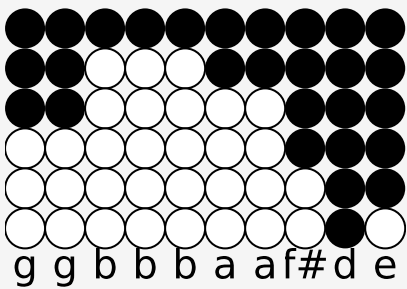
The weath-er it was dry;



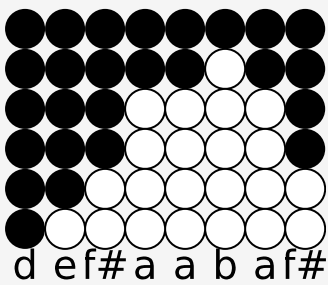
Th-e sun so hot I froze to death,



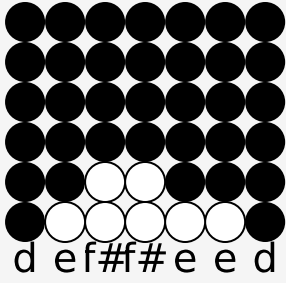
Su-san-na, don't you cry.



Oh, Su-san-na, oh, don't you cry for me;



I-ve come from Al-a-bam-a



with my ban-jo on my knee.

Source: <https://simpletinwhistle.com>