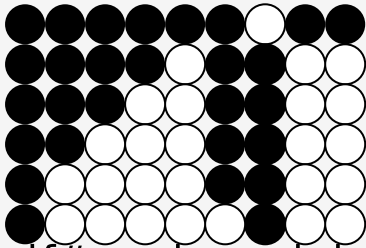


Tin whistle tabs for: Riptide

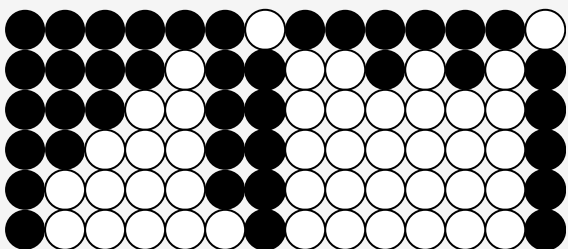
Genre: folk-pop

Author/Performer: Vance Joy



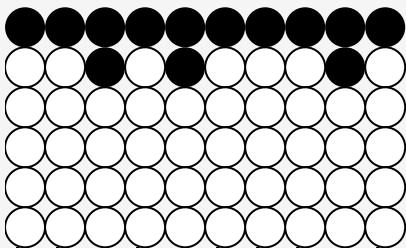
df#g a bE+D+b b

I was scared of dentists and the dark



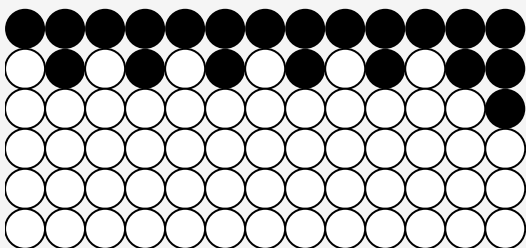
df#g a bE+D+b b a b a bD+

I was scared of pretty girls and starting conversations



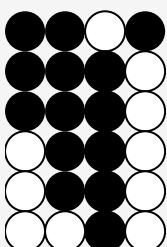
b b a b a b b a b

Oh, all my friends are turning green



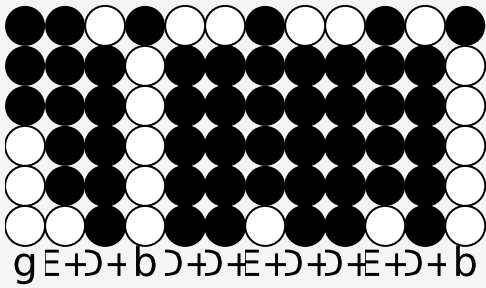
b a b a b a b a b a b a g

You're the magician's assistant in their dream



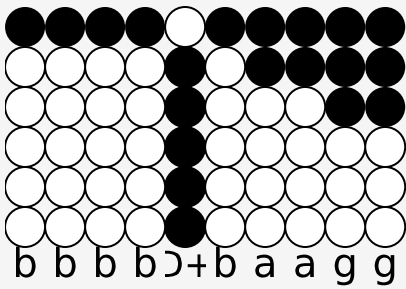
gE+D+b

Oh

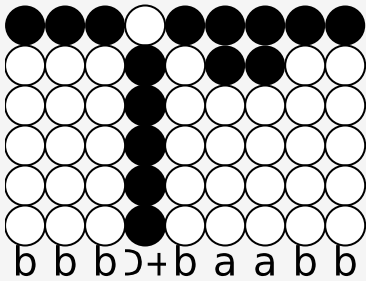


Oh, and they come unstuck

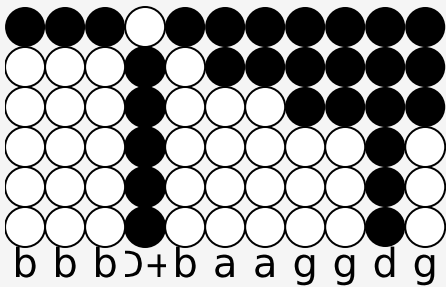
Chorus



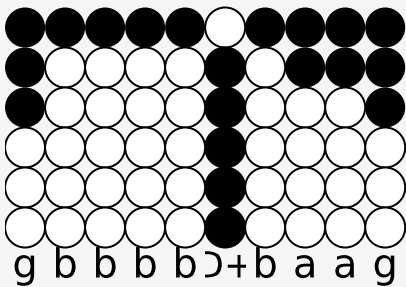
Lady, running down to the riptide



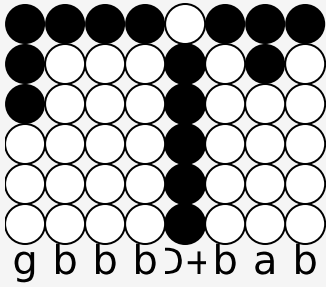
Taken away to the dark side



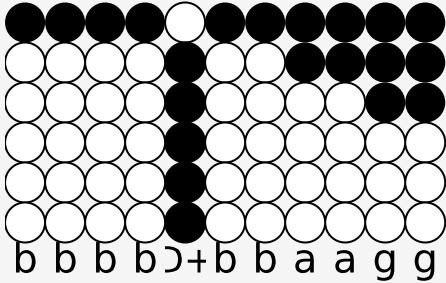
I wanna be your left hand man



I love you when you're singing that song

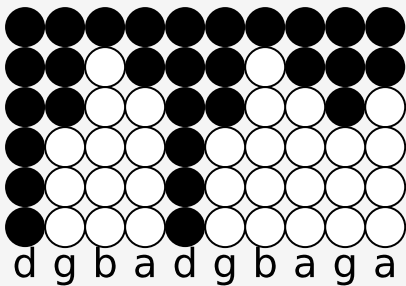


And I got a lump in my throat

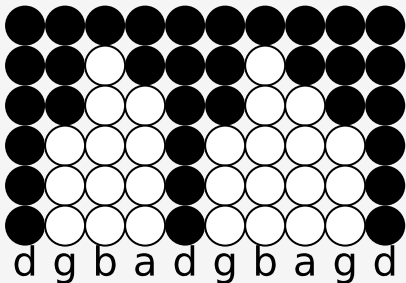


'Cause you're gonna sing the words wrong
 There's this movie that I think you'll like
 This guy decides to quit his job and heads to New York City
 This cowboy's running from himself
 And she's been living on the highest shelf
 Oh, and they come unstuck

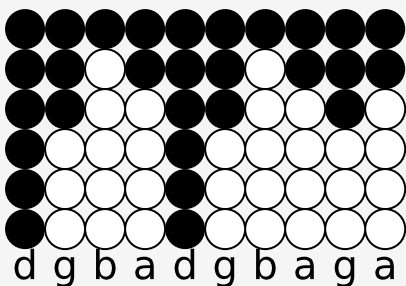
Chorus



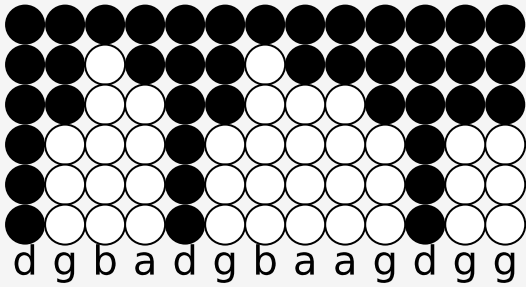
I just wanna, I just wanna know



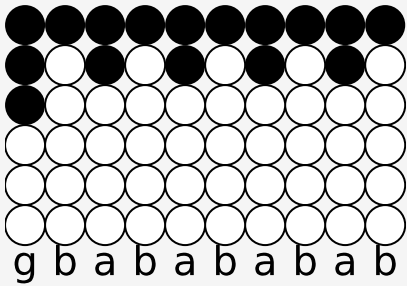
If you're gonna, if you're gonna stay



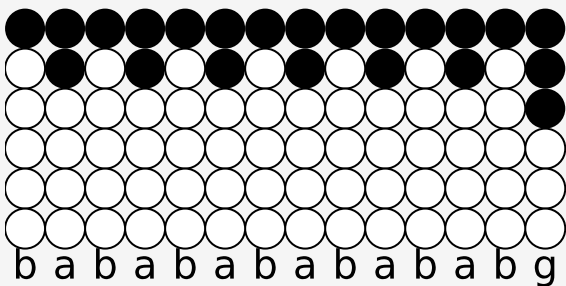
I just gotta, I just gotta know



I can't have it, I can't have it any other way

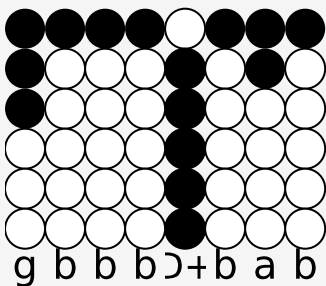


I swear she's destined for the screen

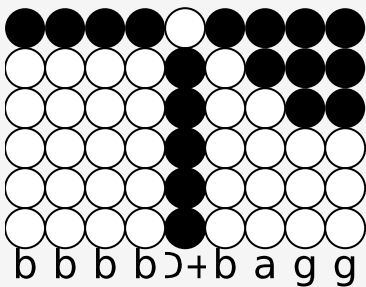


Closest thing to Michelle Pfeiffer that you've ever seen, oh

Chorus x3



And I got a lump in my throat



'Cause you're gonna sing the words wrong

Source: <https://simpletinwhistle.com>