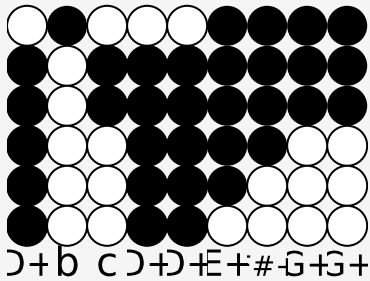


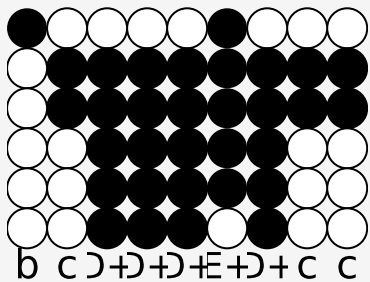
# Tin whistle tabs for: Santa Claus is Coming to Town

Genre: christmas

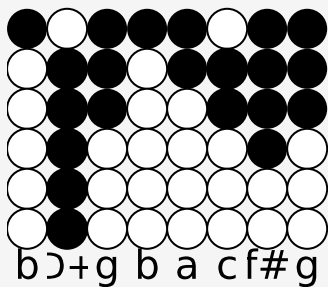
Author/Performer: J. Fred Coots (music) and Haven Gillespie (lyrics)



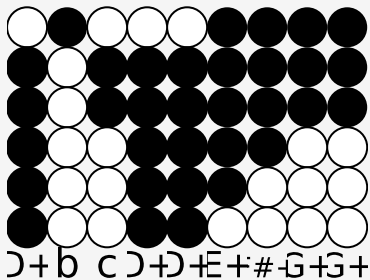
You better watch out, better not cry,



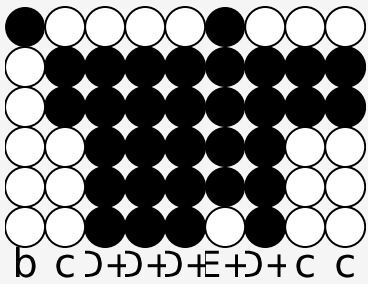
better not pout, I'm telling you why;



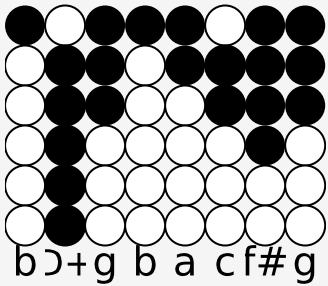
Santa Claus is coming to town.



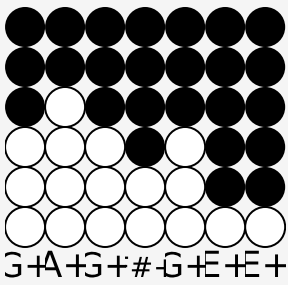
He's making a list, checking it twice,



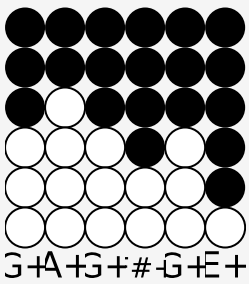
gonna find out who's naughty or nice;



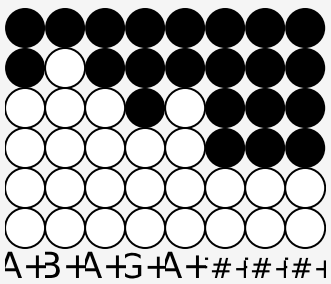
Santa Claus is coming to town.



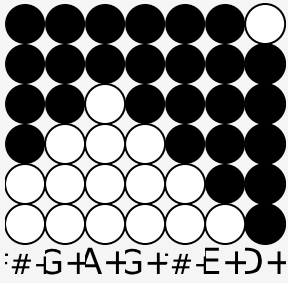
He see's you when you're sleeping.



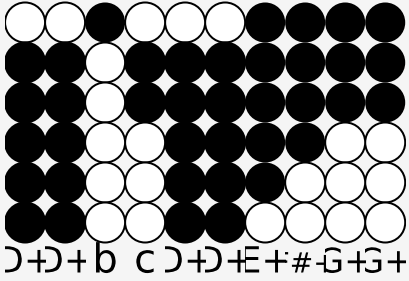
He know's when you're awake.



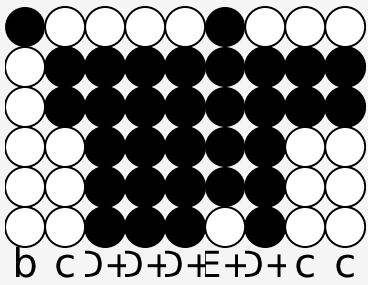
He know's if you've been bad or good,



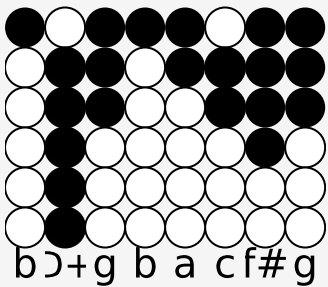
so be good for goodness sake!



Oh, you better watch out, better not cry,



better not pout, I'm telling you why;



Santa Claus is Coming to Town.