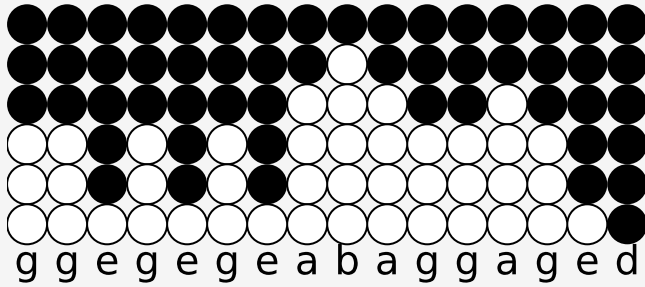


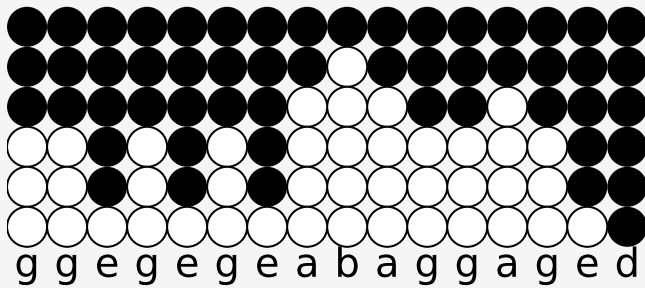
Tin whistle tabs for: Someone You Loved

Genre: pop

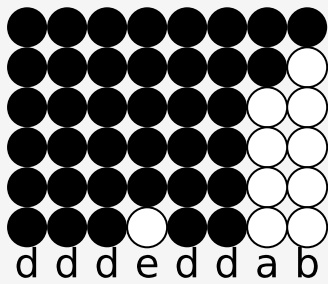
Author/Performer: Lewis Capaldi



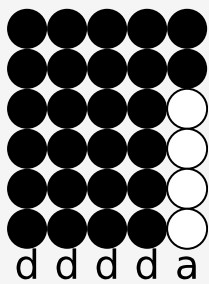
I'm going under and this time I fear there's no one to save me



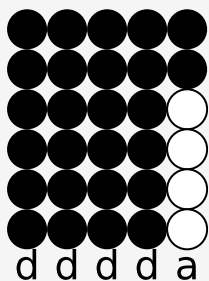
This all or nothing really got a way of driving me crazy



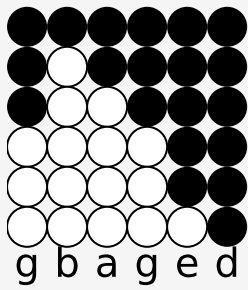
I need somebody to heal



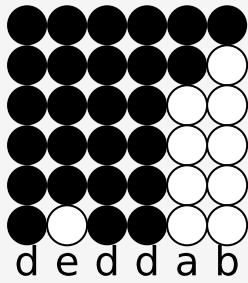
Somebody to know



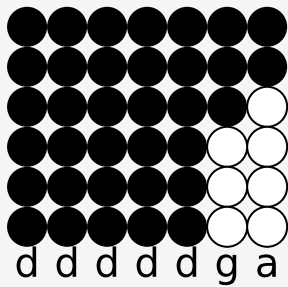
Somebody to have



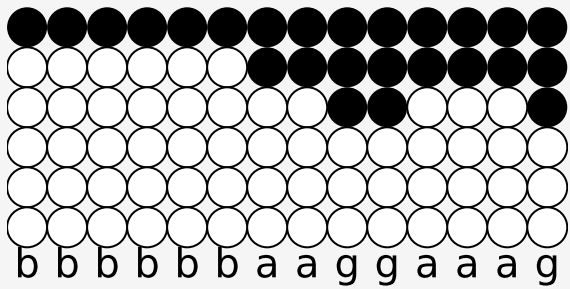
Somebody to hold



It's easy to say

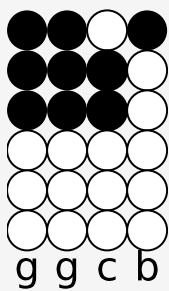


But it's never the same

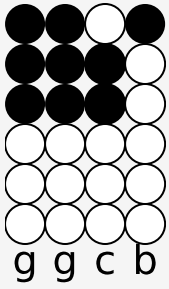


I guess I kinda liked the way you numbed all the pain

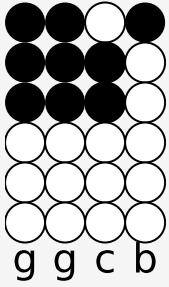
Chorus



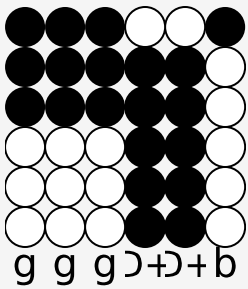
Now the day bleeds



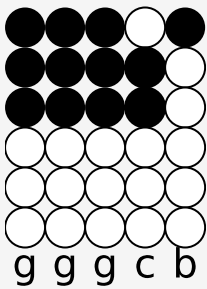
Into nightfall



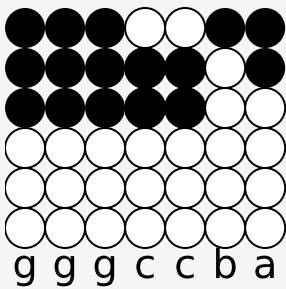
And you're not here



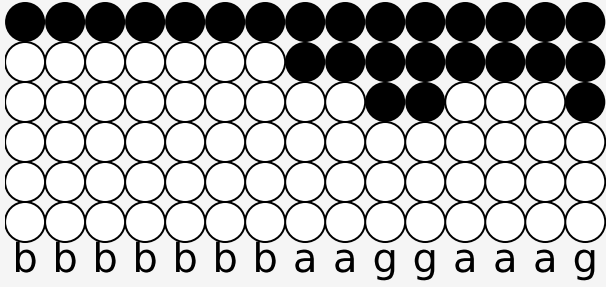
To get me through it all



I let my guard down



And then you pulled the rug



I was getting kinda used to being someone you loved

Source: <https://simpletinwhistle.com>