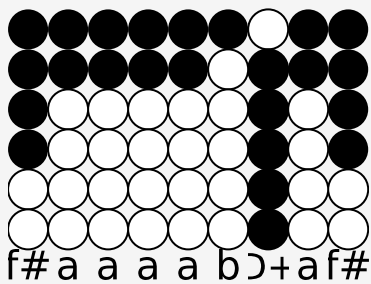
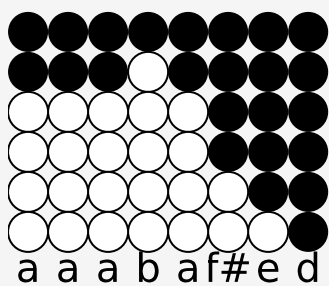


Tin whistle tabs for: Sourwood Mountain

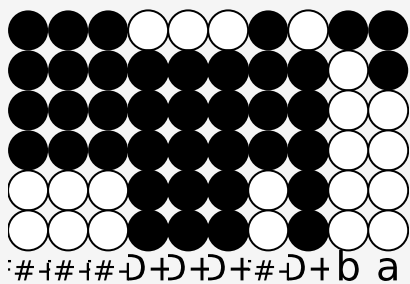
Genre: folk



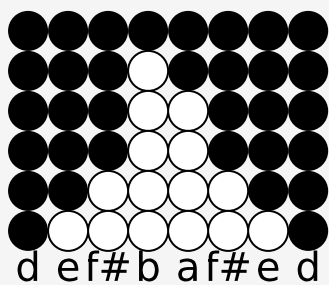
Im go-in up on Sour-wood Moun-tain,



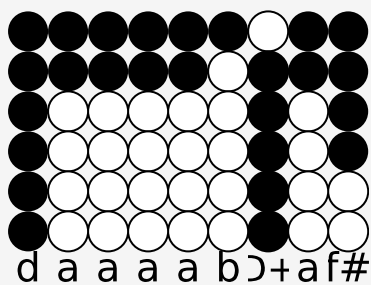
Hi-Dee-Ho-Dee Did-dle-Um-Day.



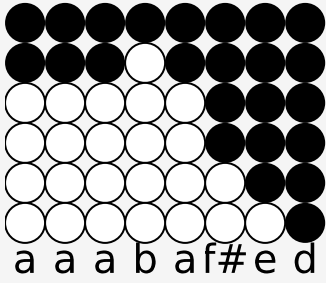
So man-y prèt-ty girls I cant count em



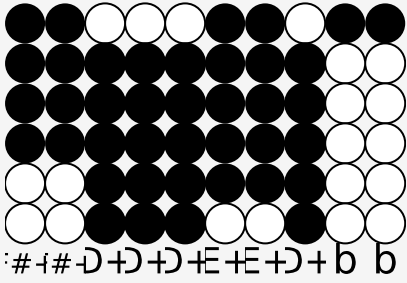
and thats where Im go-in to stay.



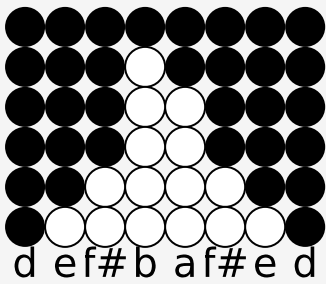
You take Sal-ly and Ill take Su-zy,



Hi-Dee-Ho-Dee Did-dle-Um-Day.



Theres a man-y that we can be choo-sey,



Hi-Dee-Ho-Dee Did-dle-Um-Day.