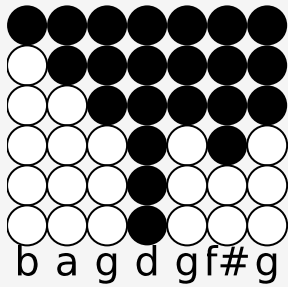
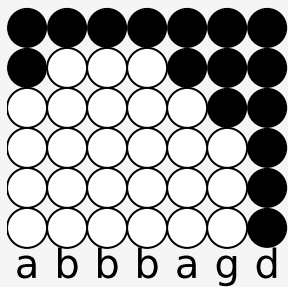


# Tin whistle tabs for: The Luau

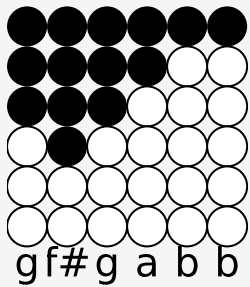
Genre: folk



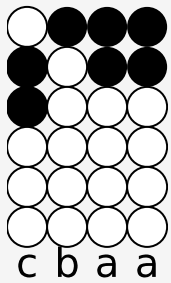
Comes the lu-au beaut-i-ful



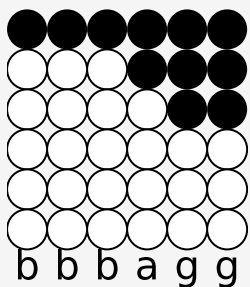
the morn-ing mak-ing rea-dy



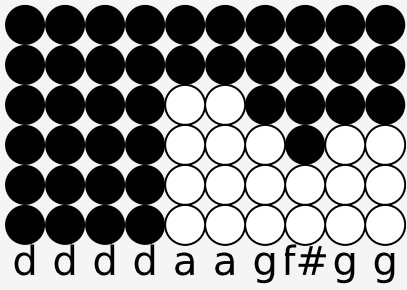
in the ear-ly morn-ing



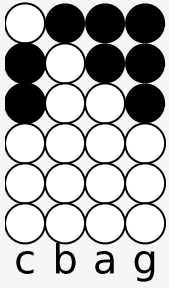
hear the fish-ers



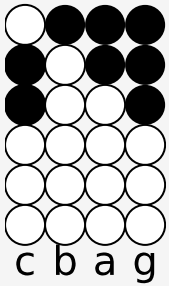
shout-ing of their catch-ing



read-y for the feast-ing at the lu-au



hey uhh ho uhh



hey uhh ho uhh