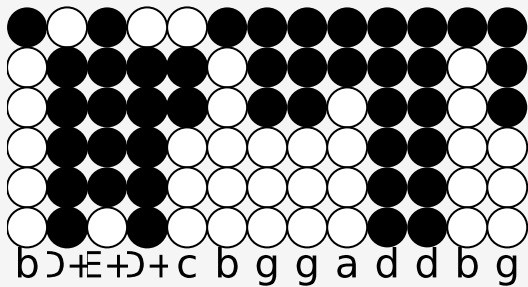
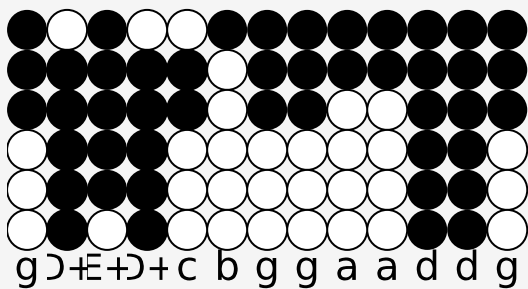


Tin whistle tabs for: The more we are together

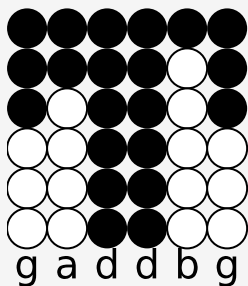
Genre: folk



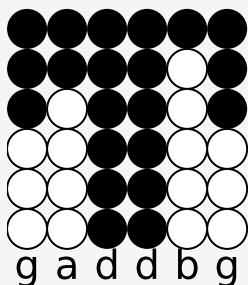
the more we are to-geth-er to-geth-er to-geth-er



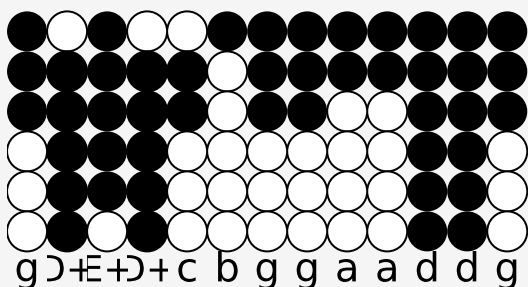
the more we are to-geth-er, the happ-i-er we`ll be



for your friends are my friends



and my friends are your friends



the more we are to-geth-er, the happ-i-er we`ll be.

Source: <https://simpletinwhistle.com>