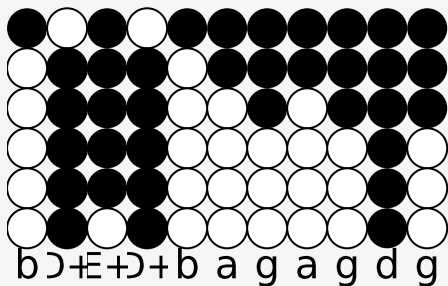


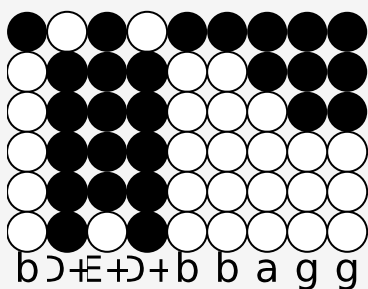
Tin whistle tabs for: Thinking Out Loud

Genre: pop

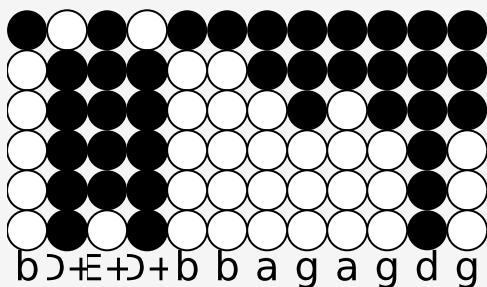
Author/Performer: Ed Sheeran



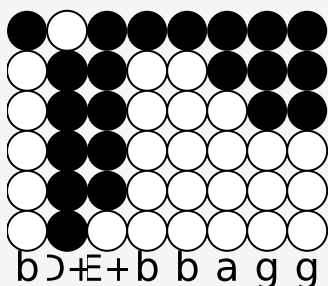
When your legs don't work like they used to before



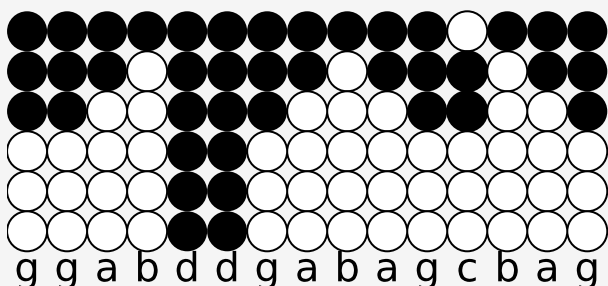
And I can't sweep you off of your feet



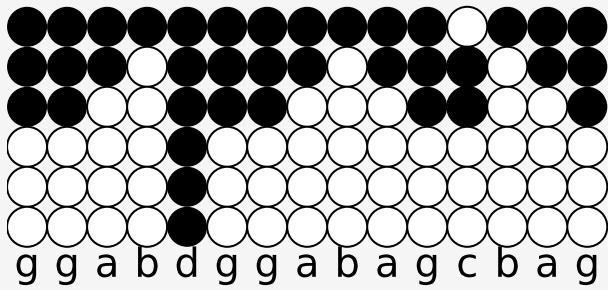
Will your mouth still remember the taste of my love?



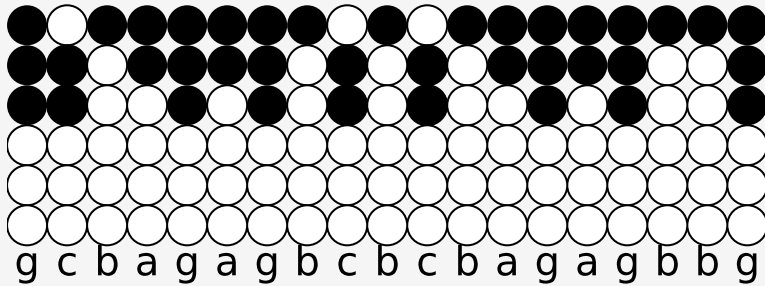
Will your eyes still smile from your cheeks?



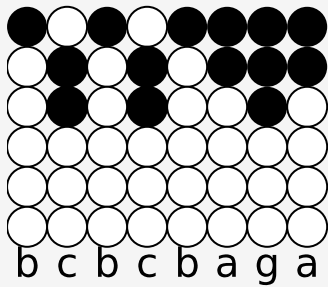
And, darling, I will be loving you 'til we're seventy



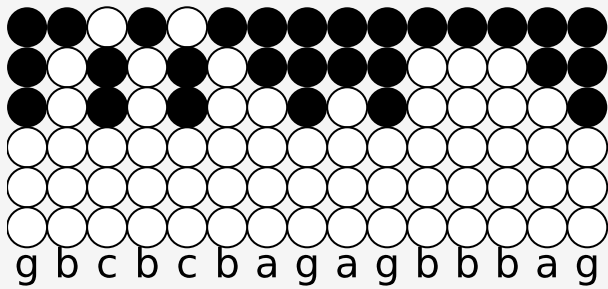
And, baby, my heart could still fall as hard at twenty three



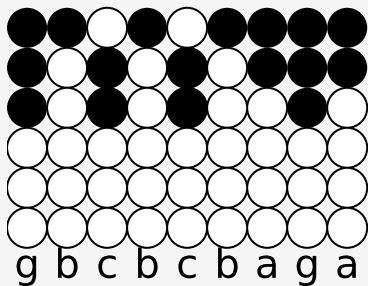
And I'm thinking 'bout how people fall in love in mysterious ways



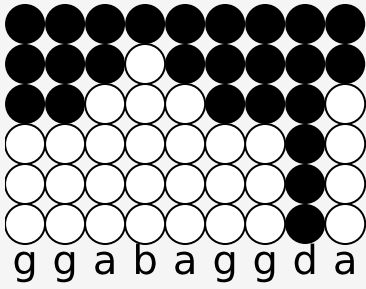
Maybe just the touch of a hand



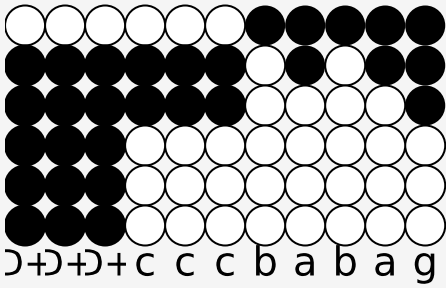
Well, me - I fall in love with you every single day



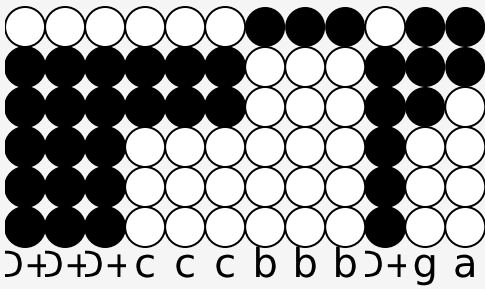
And I just wanna tell you I am
(Chorus)



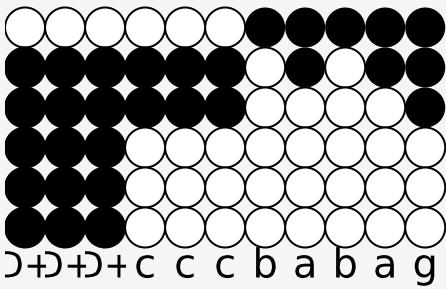
So honey now



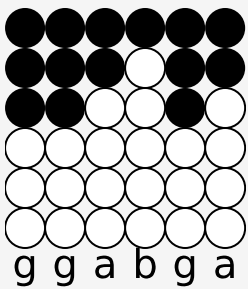
Take me into your loving arms



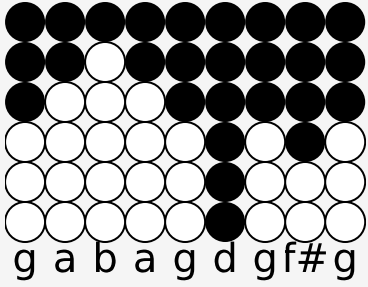
Kiss me under the light of a thousand stars



Place your head on my beating heart



I'm thinking out loud



Maybe we found love right where we are

Source: <https://simpletinwhistle.com>